



Bell-Southcn Testing Laboratory(Shenzhen)  
www.bell-southcn.com  
Email:Marketing@bell-southcn.com  
Tel:+86 755 29405577 Fax:+86 755 29405799  
Address:No.115,1st Floor,A5 Building,Tianrui Industrial Park,Fuyuan 1st Road,Fuyong,Bao'an District,Shenzhen,China.

---

## TroyCSL Lighting

---

Client:

LumCAT: B1101-WZN

Luminaire:

Report No: BSR202203060101-9

Ballast type:

Test No: BSR202203060101-9

Voltage(V): 119.830

LampCAT: A15 60W

Current(A): 0.493

Lamp flux(lm)

Power (W): 59.034

Number of Lamps: 1

PF: 1.000

Length(mm): 0

Width(mm): 0

Phm Type: C

Height(mm): 0

---

## Photometric Results

---

Lumens(lm): 125.46, Luminous Efficacy(lm/W): 2.13

Central intensity(cd): 64.299, Maximum intensity(cd): 75.052

Angle of maximum intensity: C=292.5  $\gamma$ =3.0

Beam Angle(50%Imax): [C0/180]Total=93.8

[C90/270]Total=92.9

Field angle(10%Imax): [C0/180]Total=105.6

[C90/270]Total=104.6

Maximum s/h(1/2): C0\_180=1.28 C90\_270=74.07

Maximum s/h(1/4): C0\_180=62.57 C90\_270=1.59

Up flux rate of LUM(%): - -

Down flux rate of LUM(%): 100.00%

CIE Type : Direct lighting

Output flux ratio in  $\pi$  solid angle : 99.824%

$\gamma(^{\circ})$	Average I(cd)	Zonal F(lm)	Sum F(lm)	Eff Flux(%)	Eff Sum(%)
0.0	64.299	0.000	0	0.00%	0.00%
1.0	66.530	0.063	0.063	0.05%	0.05%
2.0	68.117	0.193	0.256	0.15%	0.20%
3.0	68.640	0.327	0.583	0.26%	0.46%
4.0	68.515	0.459	1.042	0.37%	0.83%
5.0	68.216	0.588	1.63	0.47%	1.30%
6.0	69.006	0.721	2.351	0.57%	1.87%
7.0	69.007	0.857	3.208	0.68%	2.56%
8.0	68.679	0.985	4.193	0.79%	3.34%
9.0	68.113	1.109	5.302	0.88%	4.23%
10.0	67.884	1.231	6.533	0.98%	5.21%
11.0	67.987	1.358	7.89	1.08%	6.29%
12.0	69.053	1.498	9.388	1.19%	7.48%
13.0	67.978	1.626	11.015	1.30%	8.78%
14.0	67.628	1.736	12.75	1.38%	10.16%
15.0	66.870	1.846	14.597	1.47%	11.63%
16.0	67.173	1.964	16.561	1.57%	13.20%
17.0	66.934	2.088	18.649	1.66%	14.86%
18.0	66.820	2.205	20.855	1.76%	16.62%
19.0	66.598	2.321	23.176	1.85%	18.47%
20.0	65.710	2.422	25.597	1.93%	20.40%
21.0	65.505	2.520	28.117	2.01%	22.41%
22.0	66.138	2.645	30.762	2.11%	24.52%
23.0	65.404	2.760	33.523	2.20%	26.72%
24.0	66.093	2.875	36.398	2.29%	29.01%
25.0	65.100	2.983	39.381	2.38%	31.39%
26.0	64.124	3.050	42.431	2.43%	33.82%
27.0	61.577	3.075	45.506	2.45%	36.27%
28.0	58.237	3.033	48.54	2.42%	38.69%
29.0	54.209	2.942	51.482	2.34%	41.03%
30.0	51.394	2.851	54.333	2.27%	43.31%
31.0	46.746	2.731	57.064	2.18%	45.48%
32.0	42.135	2.546	59.61	2.03%	47.51%
33.0	39.449	2.403	62.014	1.92%	49.43%
34.0	36.096	2.286	64.3	1.82%	51.25%
35.0	35.358	2.219	66.519	1.77%	53.02%
36.0	38.703	2.358	68.877	1.88%	54.90%
37.0	41.715	2.623	71.5	2.09%	56.99%

## TroyCSL Lighting B1101-WZN

## Zonal flux distribution table

Appendix Page: 3 Total:21

$\gamma(^{\circ})$	Average I(cd)	Zonal F(lm)	Sum F(lm)	Eff Flux(%)	Eff Sum(%)
38.0	46.544	2.946	74.446	2.35%	59.34%
39.0	48.289	3.237	77.683	2.58%	61.92%
40.0	49.634	3.415	81.098	2.72%	64.64%
41.0	50.360	3.561	84.659	2.84%	67.48%
42.0	51.152	3.688	88.347	2.94%	70.42%
43.0	51.009	3.784	92.131	3.02%	73.44%
44.0	48.281	3.747	95.879	2.99%	76.42%
45.0	44.008	3.547	99.426	2.83%	79.25%
46.0	40.675	3.312	102.737	2.64%	81.89%
47.0	36.562	3.072	105.809	2.45%	84.34%
48.0	31.168	2.738	108.547	2.18%	86.52%
49.0	25.817	2.340	110.888	1.87%	88.39%
50.0	21.275	1.963	112.851	1.57%	89.95%
51.0	16.403	1.594	114.445	1.27%	91.22%
52.0	11.775	1.209	115.654	0.96%	92.19%
53.0	7.094	0.821	116.475	0.65%	92.84%
54.0	4.625	0.517	116.992	0.41%	93.25%
55.0	4.486	0.407	117.398	0.32%	93.58%
56.0	4.370	0.400	117.798	0.32%	93.89%
57.0	4.266	0.395	118.193	0.31%	94.21%
58.0	4.162	0.390	118.583	0.31%	94.52%
59.0	4.065	0.385	118.968	0.31%	94.83%
60.0	3.948	0.379	119.346	0.30%	95.13%
61.0	3.835	0.371	119.718	0.30%	95.42%
62.0	3.709	0.364	120.081	0.29%	95.71%
63.0	3.581	0.355	120.436	0.28%	96.00%
64.0	3.440	0.344	120.78	0.27%	96.27%
65.0	3.297	0.333	121.114	0.27%	96.54%
66.0	3.134	0.321	121.435	0.26%	96.79%
67.0	2.974	0.307	121.742	0.24%	97.04%
68.0	2.808	0.293	122.035	0.23%	97.27%
69.0	2.635	0.278	122.312	0.22%	97.49%
70.0	2.471	0.262	122.574	0.21%	97.70%
71.0	2.309	0.247	122.822	0.20%	97.90%
72.0	2.162	0.232	123.054	0.19%	98.08%
73.0	2.027	0.219	123.273	0.17%	98.26%
74.0	1.909	0.207	123.48	0.16%	98.42%
75.0	1.792	0.196	123.676	0.16%	98.58%

Equipment: GMS2200  
Temperature( $^{\circ}\text{C}$ ): 26.3

Date: 2022-3-6  
Humidity(%): 68.0%

Operator: Liao  
Distance(m): 12.57

## TroyCSL Lighting B1101-WZN

## Zonal flux distribution table

Appendix Page: 4 Total:21

$\gamma(^{\circ})$	Average I(cd)	Zonal F(lm)	Sum F(lm)	Eff Flux(%)	Eff Sum(%)
76.0	1.680	0.184	123.86	0.15%	98.73%
77.0	1.581	0.174	124.034	0.14%	98.86%
78.0	1.482	0.164	124.198	0.13%	99.00%
79.0	1.391	0.154	124.352	0.12%	99.12%
80.0	1.307	0.145	124.498	0.12%	99.23%
81.0	1.212	0.136	124.634	0.11%	99.34%
82.0	1.122	0.127	124.76	0.10%	99.44%
83.0	1.040	0.118	124.878	0.09%	99.54%
84.0	0.960	0.109	124.987	0.09%	99.62%
85.0	0.885	0.101	125.087	0.08%	99.70%
86.0	0.813	0.093	125.18	0.07%	99.78%
87.0	0.745	0.085	125.265	0.07%	99.85%
88.0	0.705	0.079	125.345	0.06%	99.91%
89.0	0.678	0.076	125.421	0.06%	99.97%
90.0	0.000	0.037	125.458	0.03%	100.00%
91.0	0.000	0.000	125.458	0.00%	100.00%
92.0	0.000	0.000	125.458	0.00%	100.00%
93.0	0.000	0.000	125.458	0.00%	100.00%
94.0	0.000	0.000	125.458	0.00%	100.00%
95.0	0.000	0.000	125.458	0.00%	100.00%
96.0	0.000	0.000	125.458	0.00%	100.00%
97.0	0.000	0.000	125.458	0.00%	100.00%
98.0	0.000	0.000	125.458	0.00%	100.00%
99.0	0.000	0.000	125.458	0.00%	100.00%
100.0	0.000	0.000	125.458	0.00%	100.00%
101.0	0.000	0.000	125.458	0.00%	100.00%
102.0	0.000	0.000	125.458	0.00%	100.00%
103.0	0.000	0.000	125.458	0.00%	100.00%
104.0	0.000	0.000	125.458	0.00%	100.00%
105.0	0.000	0.000	125.458	0.00%	100.00%
106.0	0.000	0.000	125.458	0.00%	100.00%
107.0	0.000	0.000	125.458	0.00%	100.00%
108.0	0.000	0.000	125.458	0.00%	100.00%
109.0	0.000	0.000	125.458	0.00%	100.00%
110.0	0.000	0.000	125.458	0.00%	100.00%
111.0	0.000	0.000	125.458	0.00%	100.00%
112.0	0.000	0.000	125.458	0.00%	100.00%
113.0	0.000	0.000	125.458	0.00%	100.00%

Equipment: GMS2200  
Temperature( $^{\circ}\text{C}$ ): 26.3

Date: 2022-3-6  
Humidity(%): 68.0%

Operator: Liao  
Distance(m): 12.57

## TroyCSL Lighting B1101-WZN

## Zonal flux distribution table

Appendix Page: 5 Total:21

$\gamma(^{\circ})$	Average I(cd)	Zonal F(lm)	Sum F(lm)	Eff Flux(%)	Eff Sum(%)
114.0	0.000	0.000	125.458	0.00%	100.00%
115.0	0.000	0.000	125.458	0.00%	100.00%
116.0	0.000	0.000	125.458	0.00%	100.00%
117.0	0.000	0.000	125.458	0.00%	100.00%
118.0	0.000	0.000	125.458	0.00%	100.00%
119.0	0.000	0.000	125.458	0.00%	100.00%
120.0	0.000	0.000	125.458	0.00%	100.00%
121.0	0.000	0.000	125.458	0.00%	100.00%
122.0	0.000	0.000	125.458	0.00%	100.00%
123.0	0.000	0.000	125.458	0.00%	100.00%
124.0	0.000	0.000	125.458	0.00%	100.00%
125.0	0.000	0.000	125.458	0.00%	100.00%
126.0	0.000	0.000	125.458	0.00%	100.00%
127.0	0.000	0.000	125.458	0.00%	100.00%
128.0	0.000	0.000	125.458	0.00%	100.00%
129.0	0.000	0.000	125.458	0.00%	100.00%
130.0	0.000	0.000	125.458	0.00%	100.00%
131.0	0.000	0.000	125.458	0.00%	100.00%
132.0	0.000	0.000	125.458	0.00%	100.00%
133.0	0.000	0.000	125.458	0.00%	100.00%
134.0	0.000	0.000	125.458	0.00%	100.00%
135.0	0.000	0.000	125.458	0.00%	100.00%
136.0	0.000	0.000	125.458	0.00%	100.00%
137.0	0.000	0.000	125.458	0.00%	100.00%
138.0	0.000	0.000	125.458	0.00%	100.00%
139.0	0.000	0.000	125.458	0.00%	100.00%
140.0	0.000	0.000	125.458	0.00%	100.00%
141.0	0.000	0.000	125.458	0.00%	100.00%
142.0	0.000	0.000	125.458	0.00%	100.00%
143.0	0.000	0.000	125.458	0.00%	100.00%
144.0	0.000	0.000	125.458	0.00%	100.00%
145.0	0.000	0.000	125.458	0.00%	100.00%
146.0	0.000	0.000	125.458	0.00%	100.00%
147.0	0.000	0.000	125.458	0.00%	100.00%
148.0	0.000	0.000	125.458	0.00%	100.00%
149.0	0.000	0.000	125.458	0.00%	100.00%
150.0	0.000	0.000	125.458	0.00%	100.00%
151.0	0.000	0.000	125.458	0.00%	100.00%

Equipment: GMS2200  
Temperature( $^{\circ}\text{C}$ ): 26.3

Date: 2022-3-6  
Humidity(%): 68.0%

Operator: Liao  
Distance(m): 12.57

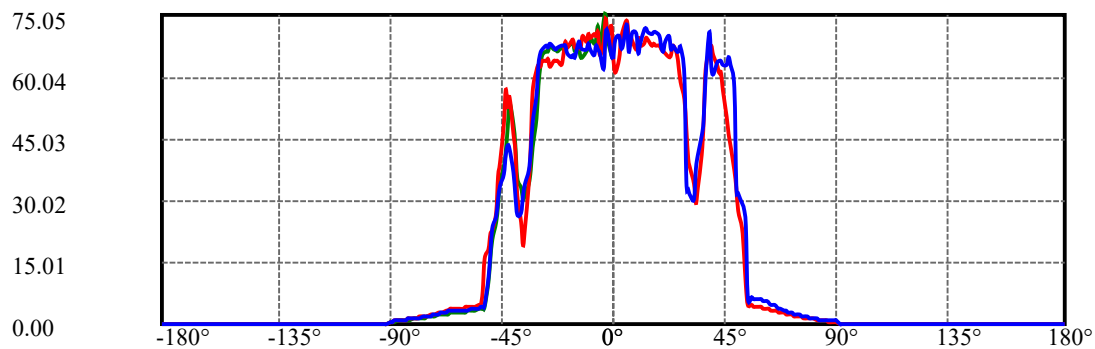
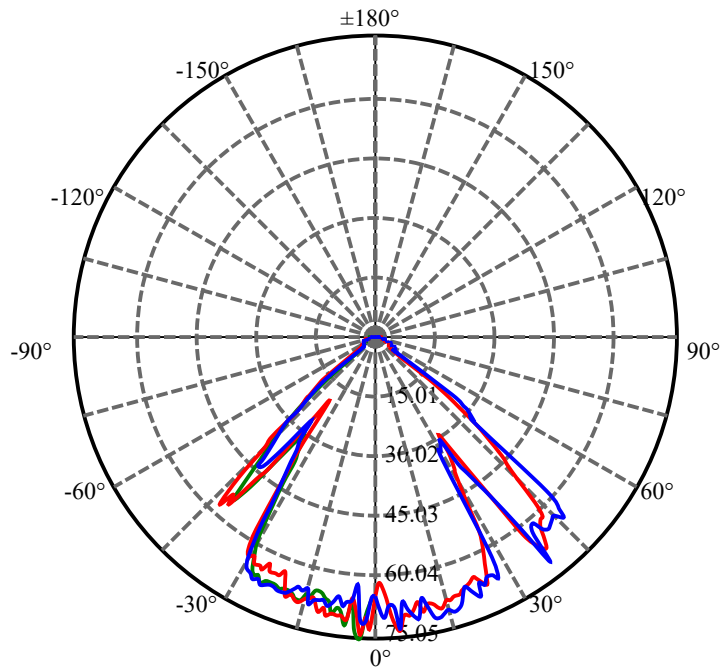
$\gamma(^{\circ})$	Average I(cd)	Zonal F(lm)	Sum F(lm)	Eff Flux(%)	Eff Sum(%)
152.0	0.000	0.000	125.458	0.00%	100.00%
153.0	0.000	0.000	125.458	0.00%	100.00%
154.0	0.000	0.000	125.458	0.00%	100.00%
155.0	0.000	0.000	125.458	0.00%	100.00%
156.0	0.000	0.000	125.458	0.00%	100.00%
157.0	0.000	0.000	125.458	0.00%	100.00%
158.0	0.000	0.000	125.458	0.00%	100.00%
159.0	0.000	0.000	125.458	0.00%	100.00%
160.0	0.000	0.000	125.458	0.00%	100.00%
161.0	0.000	0.000	125.458	0.00%	100.00%
162.0	0.000	0.000	125.458	0.00%	100.00%
163.0	0.000	0.000	125.458	0.00%	100.00%
164.0	0.000	0.000	125.458	0.00%	100.00%
165.0	0.000	0.000	125.458	0.00%	100.00%
166.0	0.000	0.000	125.458	0.00%	100.00%
167.0	0.000	0.000	125.458	0.00%	100.00%
168.0	0.000	0.000	125.458	0.00%	100.00%
169.0	0.000	0.000	125.458	0.00%	100.00%
170.0	0.000	0.000	125.458	0.00%	100.00%
171.0	0.000	0.000	125.458	0.00%	100.00%
172.0	0.000	0.000	125.458	0.00%	100.00%
173.0	0.000	0.000	125.458	0.00%	100.00%
174.0	0.000	0.000	125.458	0.00%	100.00%
175.0	0.000	0.000	125.458	0.00%	100.00%
176.0	0.000	0.000	125.458	0.00%	100.00%
177.0	0.000	0.000	125.458	0.00%	100.00%
178.0	0.000	0.000	125.458	0.00%	100.00%
179.0	0.000	0.000	125.458	0.00%	100.00%
180.0	0.000	0.000	125.458	0.00%	100.00%

## ZONAL LUMEN SUMMARY

Zone	Lumens	%Fixt
0-30	54.33	43.31%
0-40	81.10	64.64%
0-60	119.35	95.13%
0-90	125.46	100.00%
0-120	125.46	100.00%
0-180	125.46	100.00%
60-90	6.11	4.87%
90-120	0.00	0.00%
90-130	0.00	0.00%
90-150	0.00	0.00%
90-180	0.00	0.00%
0-45.28	100.37	80.00%

## ZONAL LUMEN SUMMARY

0-10	6.53
10-20	19.06
20-30	28.74
30-40	26.77
40-50	31.75
50-60	6.50
60-70	3.23
70-80	1.92
80-90	0.96
90-100	0.00
100-110	0.00
110-120	0.00
120-130	0.00
130-140	0.00
140-150	0.00
150-160	0.00
160-170	0.00
170-180	0.00



C292.5(Max): —————

C0/C180: —————

C90/C270: —————

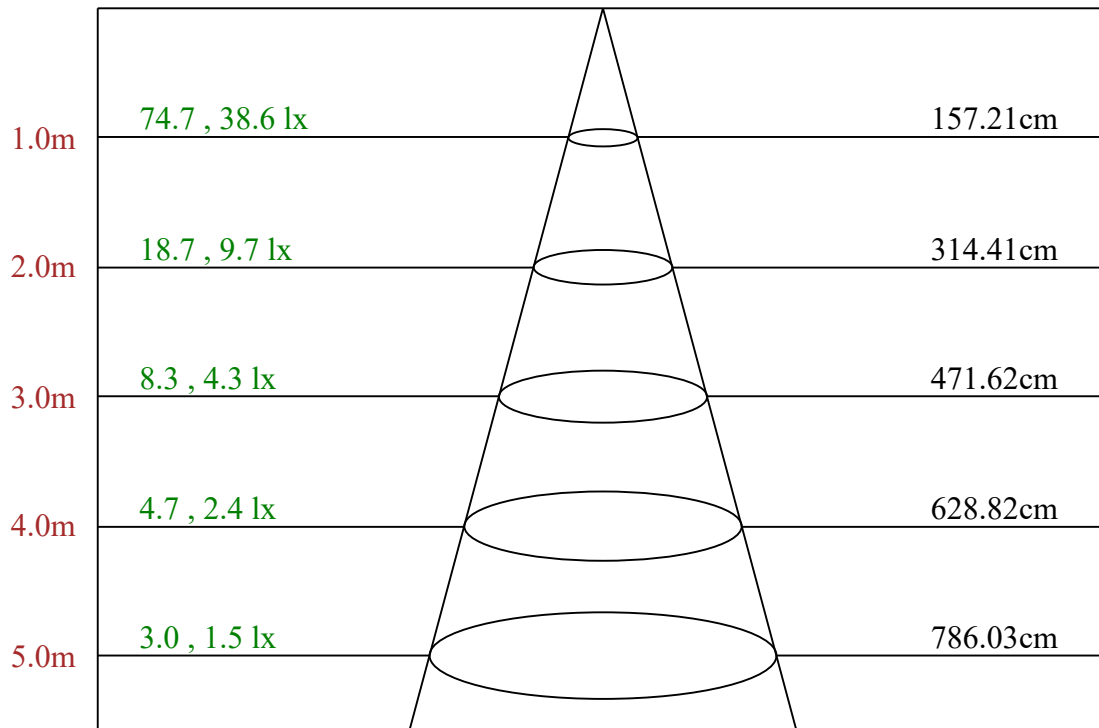
Field angle(10%Imax):C0/180Left:57.5 Right:48.5

:C90/270Left:63.5 Right:40.5

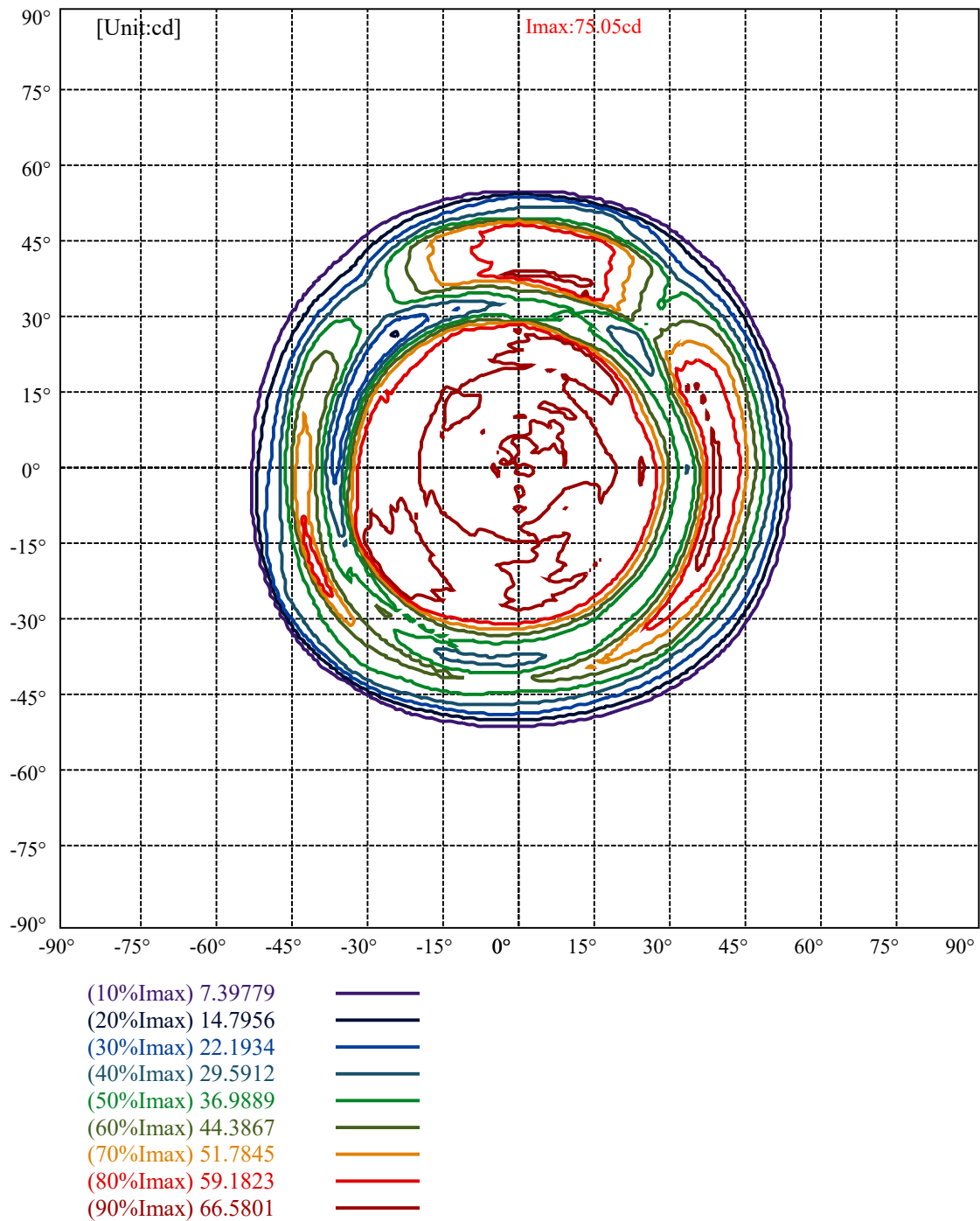
Beam Angle(50%Imax):C0/180Left:49.5 Right:42.5

:C90/270Left:56.5 Right:35.8





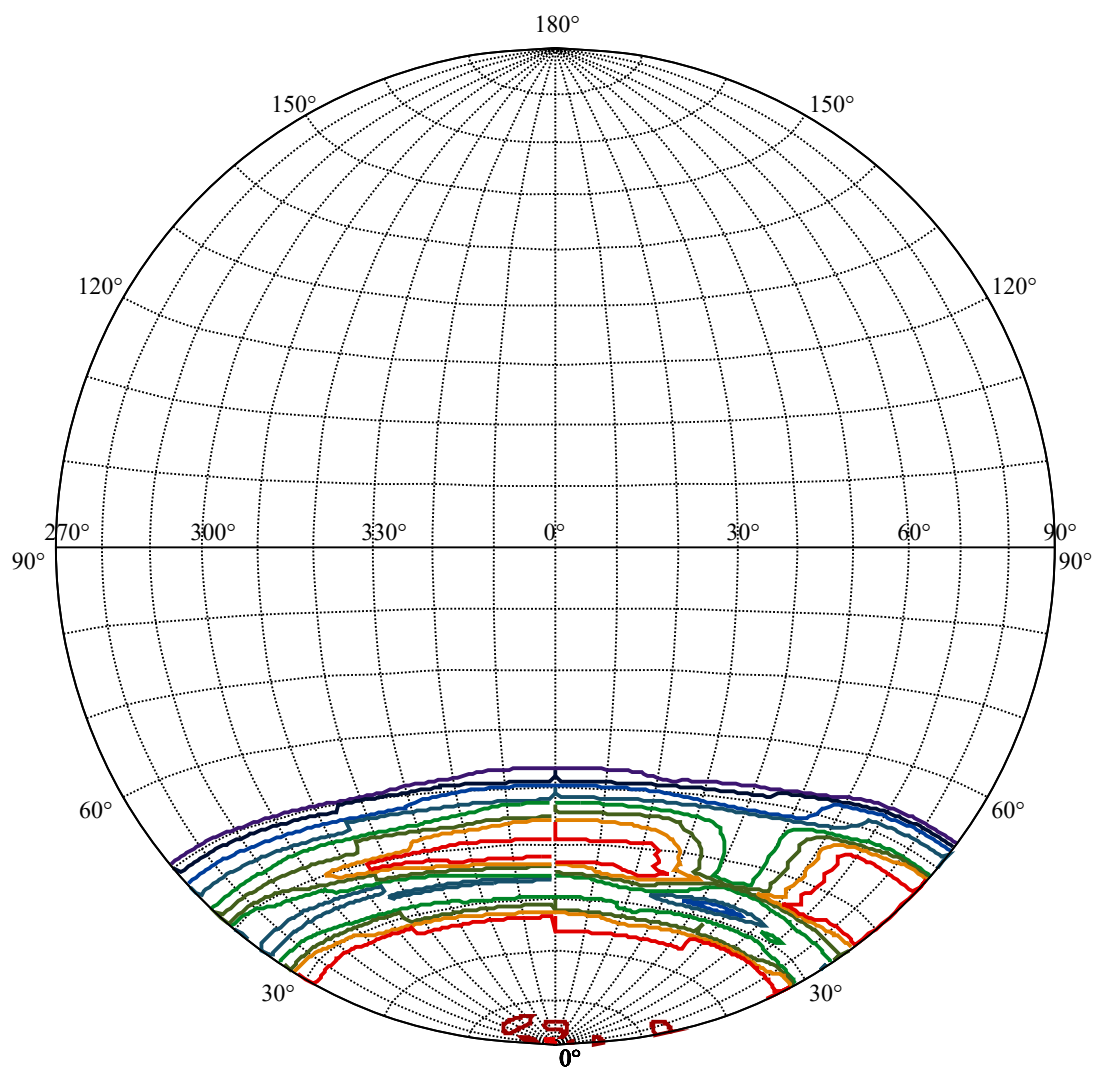
Max , Ave      Beam angle of C292.5 plane 76.34



Equipment: GMS2200  
Temperature(°C): 26.3

Date: 2022-3-6  
Humidity(%): 68.0%

Operator: Liao  
Distance(m): 12.57



House

[Unit:cd]

Road

Imax:75.05

(10%Imax) 7.90024

(20%Imax) 15.8005

(30%Imax) 23.7007

(40%Imax) 31.601

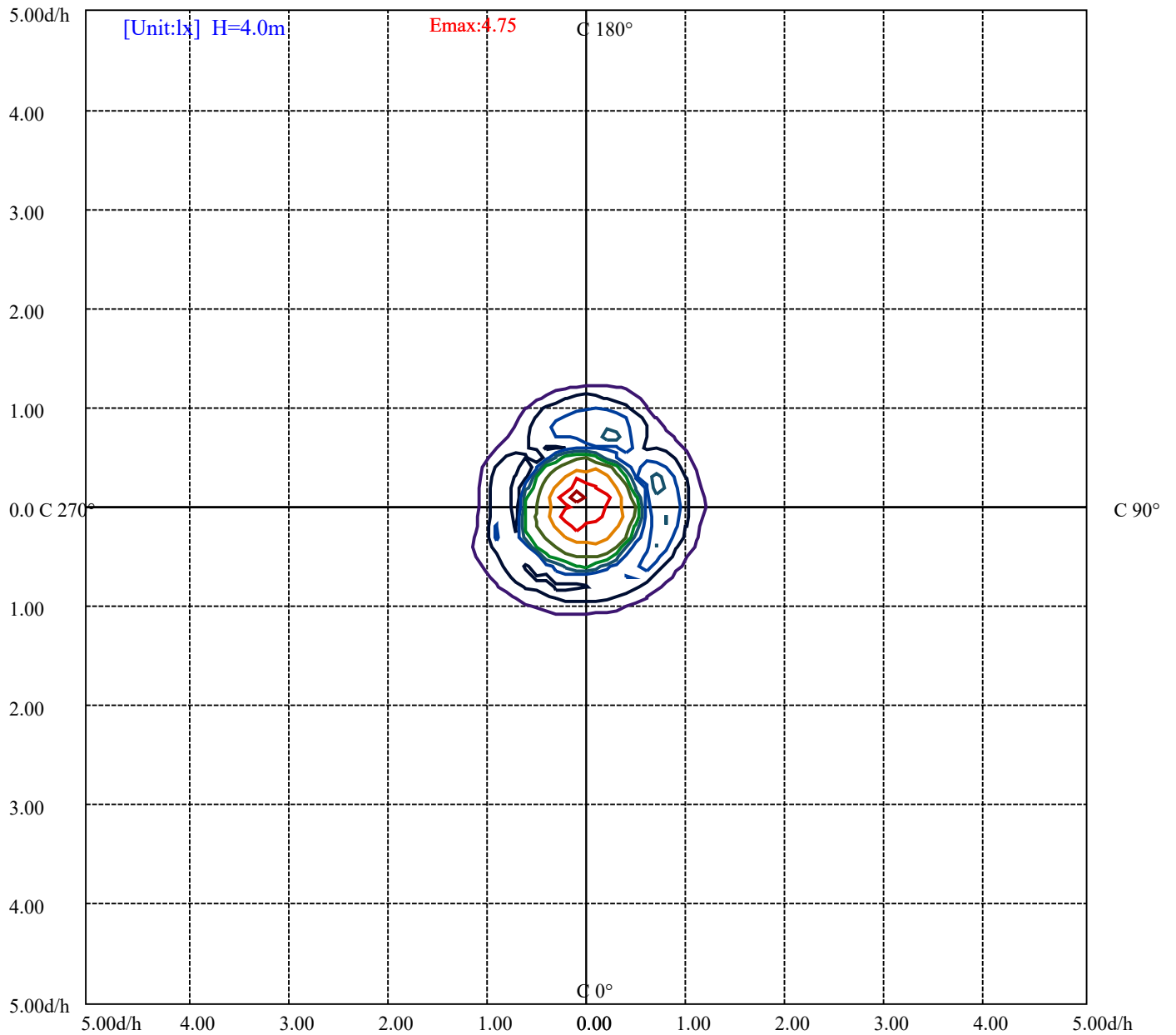
(50%Imax) 39.5012

(60%Imax) 47.4015

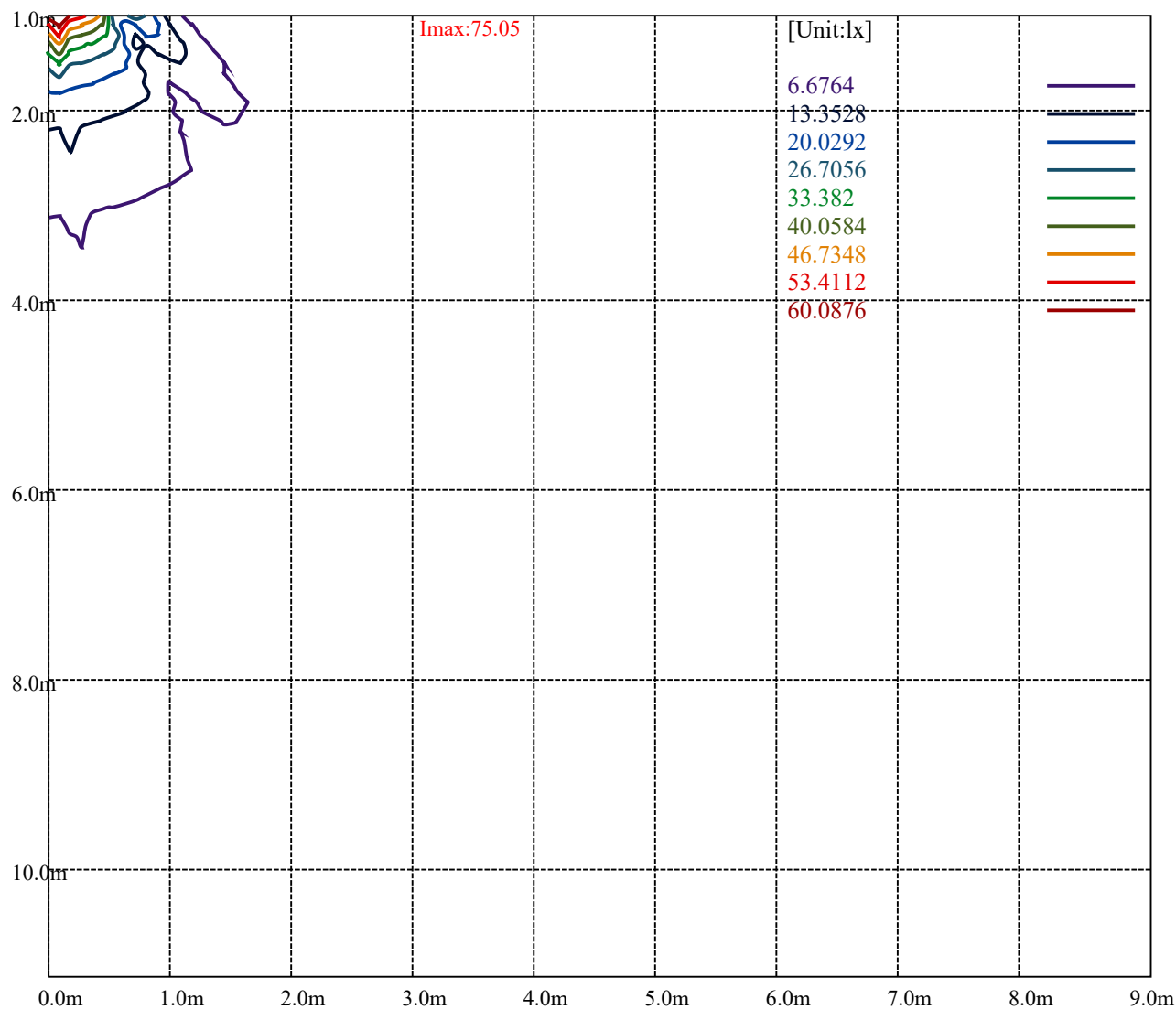
(70%Imax) 55.3017

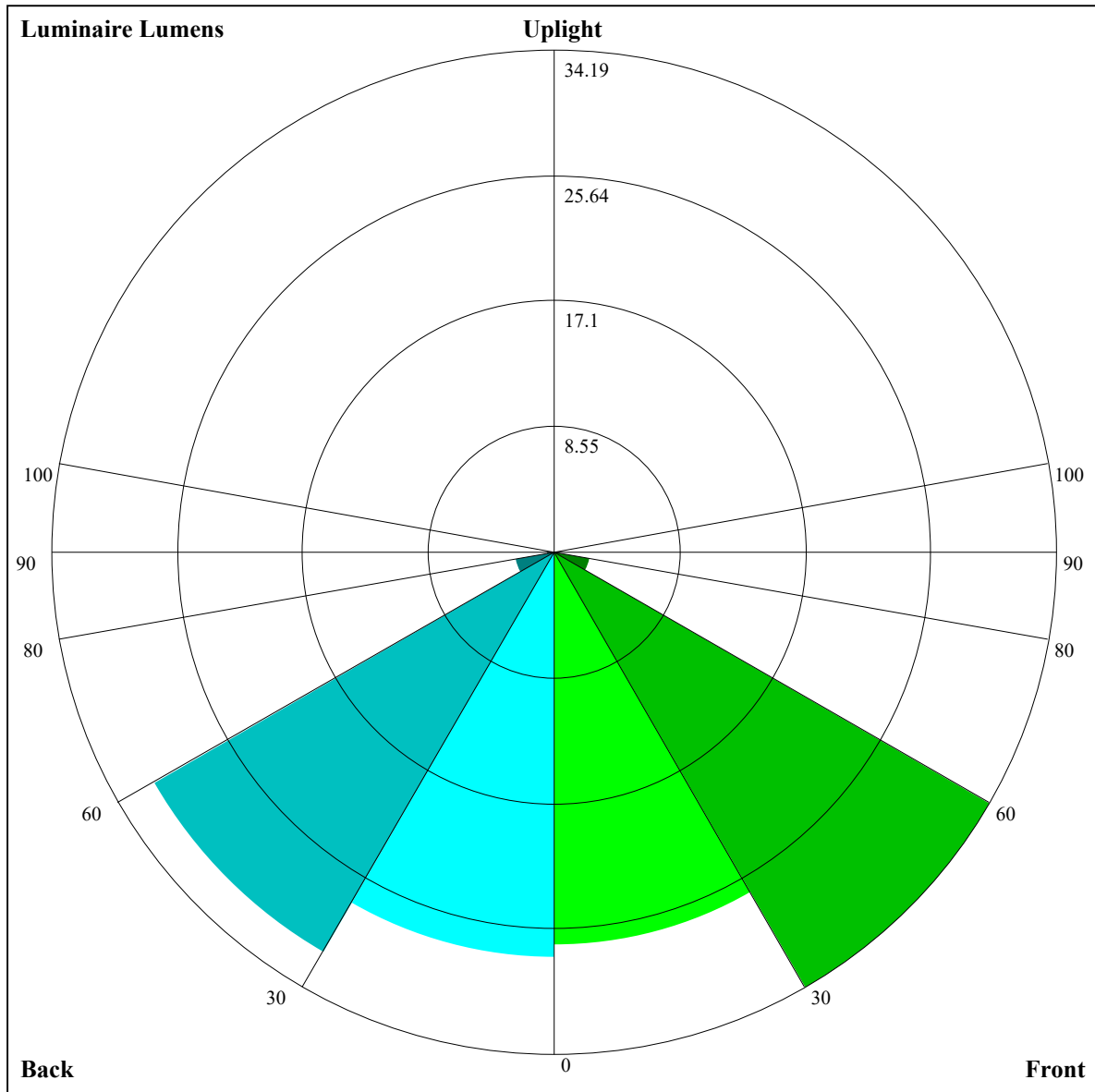
(80%Imax) 63.202

(90%Imax) 71.1022



(10%Emax) 0.4745063	—
(20%Emax) 0.9490125	—
(30%Emax) 1.423519	—
(40%Emax) 1.898025	—
(50%Emax) 2.372531	—
(60%Emax) 2.847038	—
(70%Emax) 3.321544	—
(80%Emax) 3.79605	—
(90%Emax) 4.270556	—





Luminaire Lumens:

FL=26.7,FM=34.19,FH=2.49,FVH=0.42

BL=27.63,BM=31.43,BH=2.72,BVH=0.49

UL=0,UH=0

BUG Rating:B0-U0-G0

## TroyCSL Lighting B1101-WZN

Appendix Page: 15 Total:21

## Intensity data(cd)

C/γ(°)	0.0	1.0	2.0	3.0	4.0	5.0	6.0	7.0	8.0
0.0	64.30	61.13	64.24	69.14	71.36	73.50	69.90	69.76	68.37
22.5	64.30	66.25	71.48	72.71	70.41	66.82	70.08	69.02	70.42
45.0	64.30	68.98	68.57	67.44	66.03	66.31	65.45	62.25	63.90
67.5	64.30	70.41	72.79	66.85	70.20	70.31	65.00	67.07	64.83
90.0	64.30	68.97	69.73	66.98	67.80	72.87	66.30	68.37	70.64
112.5	64.30	66.60	64.40	62.68	61.73	63.79	64.55	70.19	73.09
135.0	64.30	64.56	66.98	72.62	70.31	65.30	69.95	68.76	72.07
157.5	64.30	68.50	66.80	60.48	67.52	68.19	66.65	71.56	65.98
180.0	64.30	72.48	69.73	73.98	68.57	65.26	70.75	69.96	70.17
202.5	64.30	67.22	66.77	69.43	63.82	68.80	70.26	70.44	70.17
225.0	64.30	67.28	67.33	69.19	70.85	66.55	73.30	70.28	70.63
247.5	64.30	67.64	70.26	67.10	74.17	72.40	72.60	67.99	68.78
270.0	64.30	65.15	70.98	70.60	61.83	65.71	66.52	67.53	65.38
292.5	64.30	65.29	69.25	75.05	73.52	66.22	72.26	68.95	68.16
315.0	64.30	62.70	66.16	68.38	70.99	70.98	72.92	71.54	69.08
337.5	64.30	61.34	64.39	65.60	67.14	68.43	67.61	70.42	67.18
360.0	64.30	61.13	64.24	69.14	71.36	73.50	69.90	69.76	68.37
C/γ(°)	9.0	10.0	11.0	12.0	13.0	14.0	15.0	16.0	17.0
0.0	66.76	69.33	67.77	68.10	69.32	69.22	67.72	67.99	67.40
22.5	63.60	68.53	69.22	69.60	68.75	69.19	67.71	68.04	66.03
45.0	64.67	66.44	64.40	67.58	68.23	65.68	66.36	68.19	66.31
67.5	63.91	67.45	68.54	67.94	64.56	67.12	68.29	68.04	67.06
90.0	70.61	65.78	68.24	71.26	71.72	70.85	70.20	71.07	71.07
112.5	71.23	68.15	73.79	73.91	69.32	67.59	67.94	67.40	68.61
135.0	67.34	66.01	68.12	69.47	68.12	66.43	63.83	64.10	63.74
157.5	69.65	70.38	68.07	68.94	70.88	72.37	69.16	66.09	67.77
180.0	69.65	70.20	68.46	69.81	66.95	67.14	67.15	68.87	68.70
202.5	67.74	69.62	68.61	70.19	71.13	68.89	67.67	66.43	68.29
225.0	69.70	69.10	70.38	73.96	67.06	68.16	68.89	67.44	65.02
247.5	71.13	68.13	68.57	69.59	68.83	65.76	63.90	65.94	65.82
270.0	66.55	67.88	66.80	66.73	67.33	68.65	64.69	65.48	64.89
292.5	69.60	67.17	66.36	64.80	64.92	66.55	66.27	68.32	68.02
315.0	67.36	65.71	63.99	66.79	66.01	64.18	64.26	66.19	65.18
337.5	70.31	66.27	66.46	66.19	64.53	64.26	65.87	65.18	67.03
360.0	66.76	69.33	67.77	68.10	69.32	69.22	67.72	67.99	67.40
C/γ(°)	18.0	19.0	20.0	21.0	22.0	23.0	24.0	25.0	26.0
0.0	67.55	66.68	66.00	65.57	64.70	65.30	67.64	65.78	62.51
22.5	64.61	65.03	64.13	64.32	66.24	64.07	63.14	59.62	55.38
45.0	65.19	64.12	66.31	66.68	67.77	67.77	70.08	68.53	58.65
67.5	67.10	67.82	66.36	68.21	67.34	67.69	67.67	68.57	71.24
90.0	69.93	66.96	66.16	68.32	69.77	66.44	67.55	66.06	65.98
112.5	72.43	68.15	64.32	65.03	65.37	62.96	63.63	61.50	60.67
135.0	65.08	66.19	67.25	66.65	66.28	64.06	63.20	61.59	60.61
157.5	69.95	68.50	65.51	64.18	65.49	65.07	64.77	63.77	62.00
180.0	67.33	68.40	65.24	62.71	64.09	64.01	64.06	62.24	64.18
202.5	64.48	67.14	65.05	64.70	67.12	65.60	69.22	67.18	67.83
225.0	66.96	65.73	63.36	63.33	66.17	65.40	66.69	66.17	69.76
247.5	65.07	65.65	66.06	63.00	63.79	64.34	64.01	63.19	63.42
270.0	65.73	67.48	67.63	67.39	67.15	66.88	67.33	68.10	66.95
292.5	67.28	66.61	66.65	66.93	66.28	66.44	66.46	67.67	66.01
315.0	64.67	65.18	65.30	65.13	64.53	65.03	66.85	65.30	65.51
337.5	65.76	65.94	66.03	65.92	66.11	65.40	65.21	66.33	65.27
360.0	67.55	66.68	66.00	65.57	64.70	65.30	67.64	65.78	62.51

## TroyCSL Lighting B1101-WZN

Intensity data(cd)										Appendix Page: 16 Total:21	
C/ $\gamma$ (°)	27.0	28.0	29.0	30.0	31.0	32.0	33.0	34.0	35.0		
0.0	58.84	54.56	47.61	39.94	37.78	34.08	29.20	33.23	40.97		
22.5	49.91	42.27	37.70	37.24	34.41	34.03	43.29	50.81	62.65		
45.0	50.48	43.42	40.26	31.92	24.74	22.47	24.98	27.10	33.47		
67.5	48.65	39.34	40.07	38.44	41.44	36.04	38.65	39.53	48.52		
90.0	67.28	60.11	34.97	32.82	31.36	30.40	37.75	40.97	45.74		
112.5	62.27	61.38	58.94	46.90	34.59	25.30	21.49	26.45	31.17		
135.0	60.15	59.30	57.78	56.68	44.62	36.39	25.64	15.64	13.90		
157.5	61.92	60.33	58.89	60.37	56.82	47.72	34.79	25.22	16.54		
180.0	63.66	64.01	62.48	62.90	61.51	56.22	43.28	33.84	23.26		
202.5	66.22	66.16	66.79	68.75	67.20	67.88	68.18	62.84	38.98		
225.0	69.35	69.35	67.42	69.47	68.48	68.13	70.01	44.62	38.55		
247.5	65.65	63.80	64.45	65.38	62.00	57.92	48.59	43.01	38.09		
270.0	67.37	66.44	65.73	62.81	55.48	48.81	42.03	37.46	34.18		
292.5	66.39	65.27	62.33	57.94	49.80	43.10	37.18	33.84	31.06		
315.0	64.77	62.22	54.50	48.81	41.18	31.73	32.91	32.61	30.68		
337.5	62.32	53.83	47.43	41.93	36.51	33.94	33.21	30.35	37.94		
360.0	58.84	54.56	47.61	39.94	37.78	34.08	29.20	33.23	40.97		
C/ $\gamma$ (°)	36.0	37.0	38.0	39.0	40.0	41.0	42.0	43.0	44.0		
0.0	48.89	61.56	66.08	67.80	65.32	62.78	61.08	60.88	56.99		
22.5	68.59	65.15	67.47	64.86	65.34	63.01	59.93	56.80	52.62		
45.0	40.50	35.65	39.39	36.80	37.08	35.68	36.29	36.07	35.22		
67.5	68.73	65.43	68.42	66.06	65.18	64.17	66.43	64.50	63.91		
90.0	49.20	59.44	70.79	62.66	60.80	63.50	64.06	63.88	63.01		
112.5	40.12	42.11	53.50	54.70	55.14	54.76	55.76	56.01	56.41		
135.0	15.39	21.06	26.94	30.56	31.66	30.92	31.14	30.49	29.61		
157.5	18.39	26.91	33.96	41.54	47.20	46.82	47.58	47.88	45.32		
180.0	19.29	24.49	31.02	41.76	46.07	55.10	52.74	56.74	48.52		
202.5	32.22	29.23	33.88	35.66	37.15	42.38	47.29	65.13	66.52		
225.0	36.14	39.63	48.81	38.65	39.39	38.95	45.60	47.62	46.15		
247.5	36.66	38.05	26.48	27.41	29.77	34.65	44.83	45.33	40.84		
270.0	31.41	26.97	26.67	31.19	36.67	42.39	43.40	40.89	36.53		
292.5	30.37	33.13	35.28	43.28	48.43	53.60	47.54	41.93	38.46		
315.0	37.86	44.46	50.69	61.91	61.13	54.07	52.90	46.69	46.09		
337.5	45.51	54.18	65.35	67.78	67.82	63.00	61.86	55.29	46.30		
360.0	48.89	61.56	66.08	67.80	65.32	62.78	61.08	60.88	56.99		
C/ $\gamma$ (°)	45.0	46.0	47.0	48.0	49.0	50.0	51.0	52.0	53.0		
0.0	50.12	46.09	43.39	37.27	32.96	27.73	23.38	17.13	9.23		
22.5	51.19	46.11	38.82	33.80	27.84	23.07	16.89	7.46	5.09		
45.0	35.16	34.90	28.88	24.74	22.17	18.53	16.04	13.05	5.91		
67.5	66.06	63.30	56.00	40.10	36.61	33.39	32.28	29.77	16.32		
90.0	63.01	64.83	63.03	57.13	33.86	31.65	29.23	28.19	23.67		
112.5	52.77	53.75	53.80	44.84	35.91	28.20	21.46	17.82	10.55		
135.0	30.16	28.88	22.80	19.40	15.15	12.67	9.72	6.41	4.74		
157.5	43.12	36.23	30.18	23.61	18.99	14.92	10.60	7.17	4.44		
180.0	39.30	35.87	27.03	22.99	21.76	18.00	15.86	7.96	4.66		
202.5	42.06	37.86	35.88	34.29	33.37	30.43	29.07	24.59	4.74		
225.0	42.95	38.09	39.61	36.47	35.06	28.25	18.63	4.46	4.27		
247.5	40.35	36.29	33.28	28.91	21.90	15.58	8.00	4.42	4.23		
270.0	33.75	30.53	26.31	23.38	17.48	11.36	4.55	4.17	4.04		
292.5	34.33	29.10	24.78	20.37	15.94	10.14	4.23	3.89	3.73		
315.0	37.26	30.62	27.19	22.75	18.28	14.41	6.27	3.90	3.74		
337.5	42.53	38.35	34.02	28.63	25.79	22.07	16.23	8.01	4.14		
360.0	50.12	46.09	43.39	37.27	32.96	27.73	23.38	17.13	9.23		



# TroyCSL Lighting B1101-WZN

Intensity data(cd)										Appendix Page: 17 Total:21	
C/γ(°)	54.0	55.0	56.0	57.0	58.0	59.0	60.0	61.0	62.0		
0.0	4.68	4.46	4.31	4.20	4.11	4.03	3.93	3.82	3.68		
22.5	4.93	4.72	4.63	4.50	4.38	4.22	4.04	3.86	3.65		
45.0	5.29	5.15	5.06	4.95	4.79	4.61	4.41	4.20	3.95		
67.5	6.18	6.00	5.91	5.83	5.64	5.48	5.18	4.90	4.65		
90.0	6.48	6.35	6.24	6.10	5.99	5.85	5.67	5.39	5.14		
112.5	5.32	5.20	5.09	4.99	4.95	4.87	4.76	4.65	4.47		
135.0	4.63	4.50	4.38	4.30	4.20	4.14	4.08	4.01	3.92		
157.5	4.33	4.23	4.12	4.01	3.95	3.87	3.79	3.78	3.73		
180.0	4.53	4.36	4.25	4.19	4.11	4.03	3.93	3.86	3.79		
202.5	4.46	4.33	4.17	4.03	3.92	3.84	3.73	3.65	3.57		
225.0	4.17	4.06	3.90	3.79	3.68	3.59	3.46	3.35	3.29		
247.5	4.08	3.97	3.89	3.79	3.71	3.63	3.56	3.49	3.41		
270.0	3.82	3.73	3.63	3.56	3.48	3.38	3.33	3.25	3.19		
292.5	3.56	3.43	3.32	3.21	3.08	3.00	2.92	2.88	2.83		
315.0	3.57	3.48	3.35	3.25	3.16	3.10	3.03	3.00	2.92		
337.5	3.97	3.81	3.67	3.56	3.46	3.40	3.33	3.27	3.16		
360.0	4.68	4.46	4.31	4.20	4.11	4.03	3.93	3.82	3.68		
C/γ(°)	63.0	64.0	65.0	66.0	67.0	68.0	69.0	70.0	71.0		
0.0	3.49	3.33	3.16	3.02	2.81	2.65	2.51	2.31	2.13		
22.5	3.46	3.30	3.11	2.89	2.73	2.56	2.40	2.21	2.09		
45.0	3.74	3.57	3.37	3.10	2.91	2.72	2.50	2.34	2.20		
67.5	4.46	4.22	3.90	3.62	3.33	3.13	2.83	2.65	2.46		
90.0	4.85	4.49	4.19	3.93	3.67	3.37	3.13	2.91	2.69		
112.5	4.27	4.00	3.78	3.57	3.37	3.11	2.91	2.72	2.54		
135.0	3.78	3.57	3.40	3.24	3.05	2.88	2.72	2.54	2.34		
157.5	3.67	3.56	3.40	3.24	3.02	2.88	2.72	2.54	2.37		
180.0	3.71	3.63	3.54	3.32	3.14	2.97	2.81	2.61	2.45		
202.5	3.49	3.40	3.37	3.30	3.21	3.10	2.95	2.80	2.59		
225.0	3.21	3.13	3.11	3.03	2.97	2.83	2.69	2.56	2.42		
247.5	3.33	3.30	3.27	3.22	3.14	2.99	2.83	2.65	2.50		
270.0	3.18	3.16	3.11	3.05	2.95	2.81	2.62	2.48	2.32		
292.5	2.80	2.73	2.65	2.54	2.45	2.34	2.20	2.10	1.98		
315.0	2.84	2.75	2.65	2.50	2.39	2.28	2.15	2.04	1.93		
337.5	3.02	2.89	2.75	2.58	2.45	2.32	2.20	2.07	1.94		
360.0	3.49	3.33	3.16	3.02	2.81	2.65	2.51	2.31	2.13		
C/γ(°)	72.0	73.0	74.0	75.0	76.0	77.0	78.0	79.0	80.0		
0.0	2.01	1.88	1.75	1.66	1.56	1.45	1.36	1.28	1.22		
22.5	1.96	1.83	1.71	1.63	1.53	1.41	1.33	1.25	1.17		
45.0	2.05	1.88	1.79	1.67	1.58	1.45	1.36	1.26	1.17		
67.5	2.24	2.09	1.94	1.83	1.71	1.58	1.47	1.36	1.22		
90.0	2.46	2.29	2.13	1.99	1.82	1.72	1.60	1.49	1.36		
112.5	2.34	2.18	2.04	1.91	1.75	1.64	1.53	1.42	1.34		
135.0	2.21	2.07	1.98	1.80	1.71	1.61	1.52	1.42	1.34		
157.5	2.23	2.09	1.94	1.83	1.72	1.63	1.52	1.42	1.36		
180.0	2.31	2.18	2.04	1.93	1.82	1.71	1.58	1.47	1.39		
202.5	2.45	2.31	2.18	2.04	1.93	1.83	1.71	1.61	1.53		
225.0	2.24	2.13	2.05	1.91	1.80	1.72	1.63	1.52	1.45		
247.5	2.32	2.20	2.07	1.94	1.80	1.72	1.61	1.53	1.44		
270.0	2.18	2.04	1.93	1.82	1.69	1.63	1.53	1.45	1.34		
292.5	1.90	1.79	1.69	1.61	1.52	1.45	1.37	1.31	1.22		
315.0	1.85	1.74	1.66	1.55	1.47	1.37	1.31	1.25	1.19		
337.5	1.83	1.75	1.64	1.55	1.47	1.36	1.30	1.22	1.17		
360.0	2.01	1.88	1.75	1.66	1.56	1.45	1.36	1.28	1.22		

# TroyCSL Lighting B1101-WZN

Intensity data(cd)									Appendix Page: 18 Total:21		
C/γ(°)	81.0	82.0	83.0	84.0	85.0	86.0	87.0	88.0	89.0		
0.0	1.11	1.03	0.92	0.81	0.74	0.68	0.66	0.65	0.68		
22.5	1.01	0.92	0.85	0.81	0.77	0.76	0.77	0.77	0.77		
45.0	1.03	0.93	0.85	0.79	0.77	0.73	0.73	0.74	0.74		
67.5	1.11	1.00	0.90	0.82	0.77	0.74	0.71	0.73	0.73		
90.0	1.25	1.12	0.98	0.88	0.81	0.76	0.71	0.73	0.73		
112.5	1.25	1.15	1.03	0.92	0.82	0.76	0.70	0.71	0.73		
135.0	1.26	1.15	1.07	1.00	0.87	0.74	0.66	0.63	0.66		
157.5	1.28	1.17	1.11	1.03	0.95	0.81	0.71	0.62	0.60		
180.0	1.33	1.23	1.15	1.07	0.98	0.88	0.76	0.65	0.58		
202.5	1.45	1.34	1.28	1.20	1.12	1.06	0.98	0.90	0.76		
225.0	1.37	1.28	1.20	1.15	1.07	1.00	0.92	0.84	0.71		
247.5	1.34	1.26	1.19	1.12	1.04	0.98	0.87	0.76	0.63		
270.0	1.26	1.20	1.14	1.06	0.98	0.92	0.81	0.70	0.60		
292.5	1.15	1.11	1.04	0.96	0.90	0.79	0.68	0.62	0.60		
315.0	1.11	1.04	0.98	0.90	0.81	0.73	0.63	0.60	0.65		
337.5	1.07	1.01	0.95	0.84	0.74	0.68	0.62	0.65	0.68		
360.0	1.11	1.03	0.92	0.81	0.74	0.68	0.66	0.65	0.68		
C/γ(°)	90.0	91.0	92.0	93.0	94.0	95.0	96.0	97.0	98.0		
0.0	0.00	0.00	0.00	0.00	0.00	0.00	0.00	0.00	0.00		
22.5	0.00	0.00	0.00	0.00	0.00	0.00	0.00	0.00	0.00		
45.0	0.00	0.00	0.00	0.00	0.00	0.00	0.00	0.00	0.00		
67.5	0.00	0.00	0.00	0.00	0.00	0.00	0.00	0.00	0.00		
90.0	0.00	0.00	0.00	0.00	0.00	0.00	0.00	0.00	0.00		
112.5	0.00	0.00	0.00	0.00	0.00	0.00	0.00	0.00	0.00		
135.0	0.00	0.00	0.00	0.00	0.00	0.00	0.00	0.00	0.00		
157.5	0.00	0.00	0.00	0.00	0.00	0.00	0.00	0.00	0.00		
180.0	0.00	0.00	0.00	0.00	0.00	0.00	0.00	0.00	0.00		
202.5	0.00	0.00	0.00	0.00	0.00	0.00	0.00	0.00	0.00		
225.0	0.00	0.00	0.00	0.00	0.00	0.00	0.00	0.00	0.00		
247.5	0.00	0.00	0.00	0.00	0.00	0.00	0.00	0.00	0.00		
270.0	0.00	0.00	0.00	0.00	0.00	0.00	0.00	0.00	0.00		
292.5	0.00	0.00	0.00	0.00	0.00	0.00	0.00	0.00	0.00		
315.0	0.00	0.00	0.00	0.00	0.00	0.00	0.00	0.00	0.00		
337.5	0.00	0.00	0.00	0.00	0.00	0.00	0.00	0.00	0.00		
360.0	0.00	0.00	0.00	0.00	0.00	0.00	0.00	0.00	0.00		
C/γ(°)	99.0	100.0	101.0	102.0	103.0	104.0	105.0	106.0	107.0		
0.0	0.00	0.00	0.00	0.00	0.00	0.00	0.00	0.00	0.00		
22.5	0.00	0.00	0.00	0.00	0.00	0.00	0.00	0.00	0.00		
45.0	0.00	0.00	0.00	0.00	0.00	0.00	0.00	0.00	0.00		
67.5	0.00	0.00	0.00	0.00	0.00	0.00	0.00	0.00	0.00		
90.0	0.00	0.00	0.00	0.00	0.00	0.00	0.00	0.00	0.00		
112.5	0.00	0.00	0.00	0.00	0.00	0.00	0.00	0.00	0.00		
135.0	0.00	0.00	0.00	0.00	0.00	0.00	0.00	0.00	0.00		
157.5	0.00	0.00	0.00	0.00	0.00	0.00	0.00	0.00	0.00		
180.0	0.00	0.00	0.00	0.00	0.00	0.00	0.00	0.00	0.00		
202.5	0.00	0.00	0.00	0.00	0.00	0.00	0.00	0.00	0.00		
225.0	0.00	0.00	0.00	0.00	0.00	0.00	0.00	0.00	0.00		
247.5	0.00	0.00	0.00	0.00	0.00	0.00	0.00	0.00	0.00		
270.0	0.00	0.00	0.00	0.00	0.00	0.00	0.00	0.00	0.00		
292.5	0.00	0.00	0.00	0.00	0.00	0.00	0.00	0.00	0.00		
315.0	0.00	0.00	0.00	0.00	0.00	0.00	0.00	0.00	0.00		
337.5	0.00	0.00	0.00	0.00	0.00	0.00	0.00	0.00	0.00		
360.0	0.00	0.00	0.00	0.00	0.00	0.00	0.00	0.00	0.00		

# TroyCSL Lighting B1101-WZN

Intensity data(cd)										Appendix Page: 19 Total:21	
C/γ(°)	108.0	109.0	110.0	111.0	112.0	113.0	114.0	115.0	116.0		
0.0	0.00	0.00	0.00	0.00	0.00	0.00	0.00	0.00	0.00		
22.5	0.00	0.00	0.00	0.00	0.00	0.00	0.00	0.00	0.00		
45.0	0.00	0.00	0.00	0.00	0.00	0.00	0.00	0.00	0.00		
67.5	0.00	0.00	0.00	0.00	0.00	0.00	0.00	0.00	0.00		
90.0	0.00	0.00	0.00	0.00	0.00	0.00	0.00	0.00	0.00		
112.5	0.00	0.00	0.00	0.00	0.00	0.00	0.00	0.00	0.00		
135.0	0.00	0.00	0.00	0.00	0.00	0.00	0.00	0.00	0.00		
157.5	0.00	0.00	0.00	0.00	0.00	0.00	0.00	0.00	0.00		
180.0	0.00	0.00	0.00	0.00	0.00	0.00	0.00	0.00	0.00		
202.5	0.00	0.00	0.00	0.00	0.00	0.00	0.00	0.00	0.00		
225.0	0.00	0.00	0.00	0.00	0.00	0.00	0.00	0.00	0.00		
247.5	0.00	0.00	0.00	0.00	0.00	0.00	0.00	0.00	0.00		
270.0	0.00	0.00	0.00	0.00	0.00	0.00	0.00	0.00	0.00		
292.5	0.00	0.00	0.00	0.00	0.00	0.00	0.00	0.00	0.00		
315.0	0.00	0.00	0.00	0.00	0.00	0.00	0.00	0.00	0.00		
337.5	0.00	0.00	0.00	0.00	0.00	0.00	0.00	0.00	0.00		
360.0	0.00	0.00	0.00	0.00	0.00	0.00	0.00	0.00	0.00		
C/γ(°)	117.0	118.0	119.0	120.0	121.0	122.0	123.0	124.0	125.0		
0.0	0.00	0.00	0.00	0.00	0.00	0.00	0.00	0.00	0.00		
22.5	0.00	0.00	0.00	0.00	0.00	0.00	0.00	0.00	0.00		
45.0	0.00	0.00	0.00	0.00	0.00	0.00	0.00	0.00	0.00		
67.5	0.00	0.00	0.00	0.00	0.00	0.00	0.00	0.00	0.00		
90.0	0.00	0.00	0.00	0.00	0.00	0.00	0.00	0.00	0.00		
112.5	0.00	0.00	0.00	0.00	0.00	0.00	0.00	0.00	0.00		
135.0	0.00	0.00	0.00	0.00	0.00	0.00	0.00	0.00	0.00		
157.5	0.00	0.00	0.00	0.00	0.00	0.00	0.00	0.00	0.00		
180.0	0.00	0.00	0.00	0.00	0.00	0.00	0.00	0.00	0.00		
202.5	0.00	0.00	0.00	0.00	0.00	0.00	0.00	0.00	0.00		
225.0	0.00	0.00	0.00	0.00	0.00	0.00	0.00	0.00	0.00		
247.5	0.00	0.00	0.00	0.00	0.00	0.00	0.00	0.00	0.00		
270.0	0.00	0.00	0.00	0.00	0.00	0.00	0.00	0.00	0.00		
292.5	0.00	0.00	0.00	0.00	0.00	0.00	0.00	0.00	0.00		
315.0	0.00	0.00	0.00	0.00	0.00	0.00	0.00	0.00	0.00		
337.5	0.00	0.00	0.00	0.00	0.00	0.00	0.00	0.00	0.00		
360.0	0.00	0.00	0.00	0.00	0.00	0.00	0.00	0.00	0.00		
C/γ(°)	126.0	127.0	128.0	129.0	130.0	131.0	132.0	133.0	134.0		
0.0	0.00	0.00	0.00	0.00	0.00	0.00	0.00	0.00	0.00		
22.5	0.00	0.00	0.00	0.00	0.00	0.00	0.00	0.00	0.00		
45.0	0.00	0.00	0.00	0.00	0.00	0.00	0.00	0.00	0.00		
67.5	0.00	0.00	0.00	0.00	0.00	0.00	0.00	0.00	0.00		
90.0	0.00	0.00	0.00	0.00	0.00	0.00	0.00	0.00	0.00		
112.5	0.00	0.00	0.00	0.00	0.00	0.00	0.00	0.00	0.00		
135.0	0.00	0.00	0.00	0.00	0.00	0.00	0.00	0.00	0.00		
157.5	0.00	0.00	0.00	0.00	0.00	0.00	0.00	0.00	0.00		
180.0	0.00	0.00	0.00	0.00	0.00	0.00	0.00	0.00	0.00		
202.5	0.00	0.00	0.00	0.00	0.00	0.00	0.00	0.00	0.00		
225.0	0.00	0.00	0.00	0.00	0.00	0.00	0.00	0.00	0.00		
247.5	0.00	0.00	0.00	0.00	0.00	0.00	0.00	0.00	0.00		
270.0	0.00	0.00	0.00	0.00	0.00	0.00	0.00	0.00	0.00		
292.5	0.00	0.00	0.00	0.00	0.00	0.00	0.00	0.00	0.00		
315.0	0.00	0.00	0.00	0.00	0.00	0.00	0.00	0.00	0.00		
337.5	0.00	0.00	0.00	0.00	0.00	0.00	0.00	0.00	0.00		
360.0	0.00	0.00	0.00	0.00	0.00	0.00	0.00	0.00	0.00		

# TroyCSL Lighting B1101-WZN

Intensity data(cd)										Appendix Page: 20 Total:21	
C/γ(°)	135.0	136.0	137.0	138.0	139.0	140.0	141.0	142.0	143.0		
0.0	0.00	0.00	0.00	0.00	0.00	0.00	0.00	0.00	0.00		
22.5	0.00	0.00	0.00	0.00	0.00	0.00	0.00	0.00	0.00		
45.0	0.00	0.00	0.00	0.00	0.00	0.00	0.00	0.00	0.00		
67.5	0.00	0.00	0.00	0.00	0.00	0.00	0.00	0.00	0.00		
90.0	0.00	0.00	0.00	0.00	0.00	0.00	0.00	0.00	0.00		
112.5	0.00	0.00	0.00	0.00	0.00	0.00	0.00	0.00	0.00		
135.0	0.00	0.00	0.00	0.00	0.00	0.00	0.00	0.00	0.00		
157.5	0.00	0.00	0.00	0.00	0.00	0.00	0.00	0.00	0.00		
180.0	0.00	0.00	0.00	0.00	0.00	0.00	0.00	0.00	0.00		
202.5	0.00	0.00	0.00	0.00	0.00	0.00	0.00	0.00	0.00		
225.0	0.00	0.00	0.00	0.00	0.00	0.00	0.00	0.00	0.00		
247.5	0.00	0.00	0.00	0.00	0.00	0.00	0.00	0.00	0.00		
270.0	0.00	0.00	0.00	0.00	0.00	0.00	0.00	0.00	0.00		
292.5	0.00	0.00	0.00	0.00	0.00	0.00	0.00	0.00	0.00		
315.0	0.00	0.00	0.00	0.00	0.00	0.00	0.00	0.00	0.00		
337.5	0.00	0.00	0.00	0.00	0.00	0.00	0.00	0.00	0.00		
360.0	0.00	0.00	0.00	0.00	0.00	0.00	0.00	0.00	0.00		
C/γ(°)	144.0	145.0	146.0	147.0	148.0	149.0	150.0	151.0	152.0		
0.0	0.00	0.00	0.00	0.00	0.00	0.00	0.00	0.00	0.00		
22.5	0.00	0.00	0.00	0.00	0.00	0.00	0.00	0.00	0.00		
45.0	0.00	0.00	0.00	0.00	0.00	0.00	0.00	0.00	0.00		
67.5	0.00	0.00	0.00	0.00	0.00	0.00	0.00	0.00	0.00		
90.0	0.00	0.00	0.00	0.00	0.00	0.00	0.00	0.00	0.00		
112.5	0.00	0.00	0.00	0.00	0.00	0.00	0.00	0.00	0.00		
135.0	0.00	0.00	0.00	0.00	0.00	0.00	0.00	0.00	0.00		
157.5	0.00	0.00	0.00	0.00	0.00	0.00	0.00	0.00	0.00		
180.0	0.00	0.00	0.00	0.00	0.00	0.00	0.00	0.00	0.00		
202.5	0.00	0.00	0.00	0.00	0.00	0.00	0.00	0.00	0.00		
225.0	0.00	0.00	0.00	0.00	0.00	0.00	0.00	0.00	0.00		
247.5	0.00	0.00	0.00	0.00	0.00	0.00	0.00	0.00	0.00		
270.0	0.00	0.00	0.00	0.00	0.00	0.00	0.00	0.00	0.00		
292.5	0.00	0.00	0.00	0.00	0.00	0.00	0.00	0.00	0.00		
315.0	0.00	0.00	0.00	0.00	0.00	0.00	0.00	0.00	0.00		
337.5	0.00	0.00	0.00	0.00	0.00	0.00	0.00	0.00	0.00		
360.0	0.00	0.00	0.00	0.00	0.00	0.00	0.00	0.00	0.00		
C/γ(°)	153.0	154.0	155.0	156.0	157.0	158.0	159.0	160.0	161.0		
0.0	0.00	0.00	0.00	0.00	0.00	0.00	0.00	0.00	0.00		
22.5	0.00	0.00	0.00	0.00	0.00	0.00	0.00	0.00	0.00		
45.0	0.00	0.00	0.00	0.00	0.00	0.00	0.00	0.00	0.00		
67.5	0.00	0.00	0.00	0.00	0.00	0.00	0.00	0.00	0.00		
90.0	0.00	0.00	0.00	0.00	0.00	0.00	0.00	0.00	0.00		
112.5	0.00	0.00	0.00	0.00	0.00	0.00	0.00	0.00	0.00		
135.0	0.00	0.00	0.00	0.00	0.00	0.00	0.00	0.00	0.00		
157.5	0.00	0.00	0.00	0.00	0.00	0.00	0.00	0.00	0.00		
180.0	0.00	0.00	0.00	0.00	0.00	0.00	0.00	0.00	0.00		
202.5	0.00	0.00	0.00	0.00	0.00	0.00	0.00	0.00	0.00		
225.0	0.00	0.00	0.00	0.00	0.00	0.00	0.00	0.00	0.00		
247.5	0.00	0.00	0.00	0.00	0.00	0.00	0.00	0.00	0.00		
270.0	0.00	0.00	0.00	0.00	0.00	0.00	0.00	0.00	0.00		
292.5	0.00	0.00	0.00	0.00	0.00	0.00	0.00	0.00	0.00		
315.0	0.00	0.00	0.00	0.00	0.00	0.00	0.00	0.00	0.00		
337.5	0.00	0.00	0.00	0.00	0.00	0.00	0.00	0.00	0.00		
360.0	0.00	0.00	0.00	0.00	0.00	0.00	0.00	0.00	0.00		

# TroyCSL Lighting B1101-WZN

Intensity data(cd)									Appendix Page: 21 Total:21		
C/γ(°)	162.0	163.0	164.0	165.0	166.0	167.0	168.0	169.0	170.0		
0.0	0.00	0.00	0.00	0.00	0.00	0.00	0.00	0.00	0.00		
22.5	0.00	0.00	0.00	0.00	0.00	0.00	0.00	0.00	0.00		
45.0	0.00	0.00	0.00	0.00	0.00	0.00	0.00	0.00	0.00		
67.5	0.00	0.00	0.00	0.00	0.00	0.00	0.00	0.00	0.00		
90.0	0.00	0.00	0.00	0.00	0.00	0.00	0.00	0.00	0.00		
112.5	0.00	0.00	0.00	0.00	0.00	0.00	0.00	0.00	0.00		
135.0	0.00	0.00	0.00	0.00	0.00	0.00	0.00	0.00	0.00		
157.5	0.00	0.00	0.00	0.00	0.00	0.00	0.00	0.00	0.00		
180.0	0.00	0.00	0.00	0.00	0.00	0.00	0.00	0.00	0.00		
202.5	0.00	0.00	0.00	0.00	0.00	0.00	0.00	0.00	0.00		
225.0	0.00	0.00	0.00	0.00	0.00	0.00	0.00	0.00	0.00		
247.5	0.00	0.00	0.00	0.00	0.00	0.00	0.00	0.00	0.00		
270.0	0.00	0.00	0.00	0.00	0.00	0.00	0.00	0.00	0.00		
292.5	0.00	0.00	0.00	0.00	0.00	0.00	0.00	0.00	0.00		
315.0	0.00	0.00	0.00	0.00	0.00	0.00	0.00	0.00	0.00		
337.5	0.00	0.00	0.00	0.00	0.00	0.00	0.00	0.00	0.00		
360.0	0.00	0.00	0.00	0.00	0.00	0.00	0.00	0.00	0.00		
C/γ(°)	171.0	172.0	173.0	174.0	175.0	176.0	177.0	178.0	179.0		
0.0	0.00	0.00	0.00	0.00	0.00	0.00	0.00	0.00	0.00		
22.5	0.00	0.00	0.00	0.00	0.00	0.00	0.00	0.00	0.00		
45.0	0.00	0.00	0.00	0.00	0.00	0.00	0.00	0.00	0.00		
67.5	0.00	0.00	0.00	0.00	0.00	0.00	0.00	0.00	0.00		
90.0	0.00	0.00	0.00	0.00	0.00	0.00	0.00	0.00	0.00		
112.5	0.00	0.00	0.00	0.00	0.00	0.00	0.00	0.00	0.00		
135.0	0.00	0.00	0.00	0.00	0.00	0.00	0.00	0.00	0.00		
157.5	0.00	0.00	0.00	0.00	0.00	0.00	0.00	0.00	0.00		
180.0	0.00	0.00	0.00	0.00	0.00	0.00	0.00	0.00	0.00		
202.5	0.00	0.00	0.00	0.00	0.00	0.00	0.00	0.00	0.00		
225.0	0.00	0.00	0.00	0.00	0.00	0.00	0.00	0.00	0.00		
247.5	0.00	0.00	0.00	0.00	0.00	0.00	0.00	0.00	0.00		
270.0	0.00	0.00	0.00	0.00	0.00	0.00	0.00	0.00	0.00		
292.5	0.00	0.00	0.00	0.00	0.00	0.00	0.00	0.00	0.00		
315.0	0.00	0.00	0.00	0.00	0.00	0.00	0.00	0.00	0.00		
337.5	0.00	0.00	0.00	0.00	0.00	0.00	0.00	0.00	0.00		
360.0	0.00	0.00	0.00	0.00	0.00	0.00	0.00	0.00	0.00		
C/γ(°)	180.0										
0.0	0.00										
22.5	0.00										
45.0	0.00										
67.5	0.00										
90.0	0.00										
112.5	0.00										
135.0	0.00										
157.5	0.00										
180.0	0.00										
202.5	0.00										
225.0	0.00										
247.5	0.00										
270.0	0.00										
292.5	0.00										
315.0	0.00										
337.5	0.00										
360.0	0.00										