



Bell-Southcn Testing Laboratory
www.bell-southcn.com
Email:Marketing@bell-southcn.com
Tel:+86 189 2384 7751
Address:First floor, Huaxia Building, No.116, Jiangmu Road, Jianghai District, Jiangmen City, Guangdong, China.

Client:

LumCAT: B5716-TBK/PBR

Luminaire: Wall Sconce

Report No:

Ballast type:

Test No: BT25120403-9

Voltage(V): 120.000

LampCAT:

Current(A): 0.095

Lamp flux(lm)

Power (W): 8.789

Number of Lamps: 1

PF: 0.771

Length(mm): 0

Width(mm): 0

Phm Type: C

Height(mm): 0

Photometric Results

Lumens(lm): 261.98, Luminous Efficacy(lm/W): 29.81

Central intensity(cd): 100.02, Maximum intensity(cd): 103.42

Angle of maximum intensity: C=0.0 γ =10.0

Beam Angle(50%Imax): [C0/180]Total=126.5

[C90/270]Total=110.1

Field angle(10%Imax): [C0/180]Total=152.9

[C90/270]Total=147.2

IES Classification : TypeVS

Longitudinal Classification : VeryShort

Cut Off Classification : Cutoff

Max Cd(At 90°Vert) : 5.107162

Max Cd(80 to 90°Vert) : 8.937534

Street Side UpWard Lumens: 1.63%of Luminaire

Street Side DownWard Lumens: 47.30%of Luminaire

House Side UpWard Lumens: 1.82%of Luminaire

House Side DownWard Lumens: 49.25%of Luminaire

SLI: --- (C Flash Area: 0.000)

Throw: -5.3 (short), Spread: 6.1 (narrow), Control: --- (limited)

$\gamma(^{\circ})$	Average I(cd)	Zonal F(lm)	Sum F(lm)	Eff Flux(%)	Eff Sum(%)
0.0	97.834	0.000	0.000	0.000%	0.000%
1.0	97.861	0.094	0.094	0.036%	0.036%
2.0	98.047	0.281	0.375	0.107%	0.143%
3.0	98.180	0.469	0.844	0.179%	0.322%
4.0	98.419	0.658	1.502	0.251%	0.573%
5.0	98.100	0.845	2.348	0.323%	0.896%
6.0	97.408	1.027	3.375	0.392%	1.288%
7.0	94.802	1.193	4.568	0.455%	1.744%
8.0	92.248	1.339	5.907	0.511%	2.255%
9.0	87.779	1.459	7.366	0.557%	2.812%
10.0	83.257	1.548	8.914	0.591%	3.402%
11.0	80.331	1.635	10.548	0.624%	4.026%
12.0	75.011	1.698	12.246	0.648%	4.675%
13.0	70.223	1.724	13.970	0.658%	5.332%
14.0	65.010	1.731	15.701	0.661%	5.993%
15.0	58.892	1.701	17.402	0.649%	6.642%
16.0	55.540	1.677	19.079	0.640%	7.282%
17.0	51.870	1.673	20.751	0.638%	7.921%
18.0	49.289	1.668	22.419	0.637%	8.558%
19.0	48.225	1.697	24.116	0.648%	9.205%
20.0	47.667	1.755	25.871	0.670%	9.875%
21.0	47.667	1.831	27.701	0.699%	10.574%
22.0	49.130	1.945	29.647	0.742%	11.316%
23.0	51.550	2.113	31.759	0.806%	12.123%
24.0	52.987	2.286	34.045	0.872%	12.995%
25.0	56.019	2.479	36.523	0.946%	13.941%
26.0	58.546	2.704	39.228	1.032%	14.973%
27.0	60.701	2.917	42.145	1.114%	16.087%
28.0	62.616	3.122	45.267	1.192%	17.279%
29.0	63.547	3.301	48.568	1.260%	18.539%
30.0	64.664	3.462	52.030	1.321%	19.860%
31.0	65.382	3.619	55.649	1.381%	21.242%
32.0	65.888	3.761	59.409	1.436%	22.677%
33.0	66.287	3.894	63.303	1.486%	24.163%
34.0	66.393	4.015	67.319	1.533%	25.696%
35.0	66.420	4.125	71.443	1.574%	27.270%
36.0	66.420	4.230	75.673	1.614%	28.885%
37.0	66.393	4.332	80.004	1.653%	30.538%

$\gamma(^{\circ})$	Average I(cd)	Zonal F(lm)	Sum F(lm)	Eff Flux(%)	Eff Sum(%)
38.0	66.500	4.436	84.440	1.693%	32.231%
39.0	66.553	4.541	88.982	1.734%	33.965%
40.0	66.526	4.641	93.623	1.772%	35.737%
41.0	66.633	4.742	98.365	1.810%	37.547%
42.0	66.686	4.844	103.208	1.849%	39.395%
43.0	66.845	4.946	108.155	1.888%	41.284%
44.0	66.633	5.038	113.193	1.923%	43.206%
45.0	66.473	5.115	118.308	1.953%	45.159%
46.0	66.074	5.184	123.492	1.979%	47.138%
47.0	65.702	5.241	128.733	2.001%	49.138%
48.0	64.904	5.280	134.012	2.015%	51.154%
49.0	64.239	5.303	139.316	2.024%	53.178%
50.0	63.653	5.332	144.648	2.035%	55.213%
51.0	62.722	5.347	149.995	2.041%	57.254%
52.0	61.791	5.343	155.338	2.039%	59.294%
53.0	60.648	5.326	160.664	2.033%	61.327%
54.0	59.397	5.291	165.955	2.020%	63.346%
55.0	58.626	5.268	171.223	2.011%	65.357%
56.0	56.870	5.219	176.442	1.992%	67.349%
57.0	55.195	5.124	181.566	1.956%	69.305%
58.0	53.785	5.040	186.606	1.924%	71.229%
59.0	51.604	4.927	191.533	1.881%	73.109%
60.0	49.582	4.780	196.313	1.825%	74.934%
61.0	46.922	4.605	200.918	1.758%	76.692%
62.0	44.235	4.393	205.311	1.677%	78.369%
63.0	42.294	4.208	209.519	1.606%	79.975%
64.0	39.182	3.998	213.517	1.526%	81.501%
65.0	36.415	3.741	217.258	1.428%	82.929%
66.0	33.702	3.498	220.757	1.335%	84.265%
67.0	30.776	3.242	223.999	1.238%	85.502%
68.0	29.127	3.034	227.033	1.158%	86.660%
69.0	26.015	2.813	229.846	1.074%	87.734%
70.0	23.301	2.533	232.379	0.967%	88.701%
71.0	21.306	2.306	234.685	0.880%	89.581%
72.0	18.726	2.082	236.766	0.795%	90.376%
73.0	16.917	1.864	238.630	0.711%	91.087%
74.0	14.869	1.671	240.301	0.638%	91.725%
75.0	12.874	1.466	241.767	0.560%	92.284%

$\gamma(^{\circ})$	Average I(cd)	Zonal F(lm)	Sum F(lm)	Eff Flux(%)	Eff Sum(%)
76.0	11.757	1.308	243.075	0.499%	92.784%
77.0	10.135	1.167	244.242	0.446%	93.229%
78.0	9.044	1.027	245.269	0.392%	93.621%
79.0	7.980	0.915	246.183	0.349%	93.970%
80.0	7.102	0.813	246.996	0.310%	94.280%
81.0	6.756	0.749	247.746	0.286%	94.567%
82.0	6.304	0.708	248.454	0.270%	94.837%
83.0	5.985	0.668	249.122	0.255%	95.092%
84.0	5.692	0.636	249.758	0.243%	95.335%
85.0	5.320	0.601	250.359	0.229%	95.564%
86.0	5.134	0.571	250.931	0.218%	95.782%
87.0	4.868	0.547	251.478	0.209%	95.991%
88.0	4.549	0.516	251.994	0.197%	96.188%
89.0	4.362	0.488	252.482	0.186%	96.374%
90.0	4.150	0.467	252.949	0.178%	96.553%
91.0	4.070	0.451	253.400	0.172%	96.725%
92.0	3.804	0.432	253.831	0.165%	96.889%
93.0	3.724	0.412	254.244	0.157%	97.047%
94.0	3.591	0.400	254.644	0.153%	97.200%
95.0	3.378	0.381	255.025	0.145%	97.345%
96.0	3.325	0.366	255.391	0.140%	97.485%
97.0	3.272	0.359	255.750	0.137%	97.622%
98.0	3.032	0.343	256.093	0.131%	97.753%
99.0	2.953	0.325	256.417	0.124%	97.877%
100.0	2.793	0.311	256.728	0.119%	97.995%
101.0	2.607	0.291	257.019	0.111%	98.106%
102.0	2.580	0.279	257.298	0.106%	98.213%
103.0	2.474	0.271	257.568	0.103%	98.316%
104.0	2.367	0.258	257.826	0.099%	98.414%
105.0	2.288	0.247	258.074	0.094%	98.509%
106.0	2.101	0.232	258.305	0.089%	98.597%
107.0	2.128	0.222	258.528	0.085%	98.682%
108.0	2.048	0.218	258.746	0.083%	98.765%
109.0	1.915	0.206	258.952	0.079%	98.844%
110.0	1.835	0.194	259.146	0.074%	98.918%
111.0	1.702	0.182	259.328	0.069%	98.987%
112.0	1.676	0.172	259.500	0.066%	99.053%
113.0	1.569	0.164	259.665	0.063%	99.116%

$\gamma(^{\circ})$	Average I(cd)	Zonal F(lm)	Sum F(lm)	Eff Flux(%)	Eff Sum(%)
114.0	1.490	0.154	259.818	0.059%	99.175%
115.0	1.410	0.145	259.963	0.055%	99.230%
116.0	1.303	0.134	260.097	0.051%	99.281%
117.0	1.303	0.128	260.225	0.049%	99.330%
118.0	1.277	0.125	260.351	0.048%	99.378%
119.0	1.197	0.119	260.470	0.046%	99.423%
120.0	1.170	0.113	260.583	0.043%	99.467%
121.0	1.117	0.108	260.691	0.041%	99.508%
122.0	1.011	0.099	260.790	0.038%	99.546%
123.0	1.011	0.093	260.884	0.036%	99.581%
124.0	0.931	0.089	260.973	0.034%	99.615%
125.0	0.851	0.081	261.053	0.031%	99.646%
126.0	0.825	0.075	261.128	0.029%	99.675%
127.0	0.798	0.072	261.200	0.027%	99.702%
128.0	0.851	0.072	261.271	0.027%	99.729%
129.0	0.771	0.070	261.341	0.027%	99.756%
130.0	0.745	0.064	261.405	0.024%	99.780%
131.0	0.585	0.055	261.461	0.021%	99.802%
132.0	0.612	0.049	261.510	0.019%	99.820%
133.0	0.559	0.047	261.557	0.018%	99.838%
134.0	0.532	0.043	261.600	0.017%	99.855%
135.0	0.532	0.042	261.642	0.016%	99.871%
136.0	0.505	0.040	261.682	0.015%	99.886%
137.0	0.505	0.038	261.720	0.015%	99.901%
138.0	0.452	0.035	261.755	0.014%	99.914%
139.0	0.479	0.034	261.789	0.013%	99.927%
140.0	0.399	0.031	261.821	0.012%	99.939%
141.0	0.372	0.027	261.847	0.010%	99.949%
142.0	0.293	0.023	261.870	0.009%	99.958%
143.0	0.372	0.022	261.892	0.008%	99.966%
144.0	0.293	0.022	261.914	0.008%	99.975%
145.0	0.160	0.014	261.928	0.005%	99.980%
146.0	0.160	0.010	261.938	0.004%	99.984%
147.0	0.133	0.009	261.947	0.003%	99.987%
148.0	0.133	0.008	261.955	0.003%	99.990%
149.0	0.106	0.007	261.962	0.003%	99.993%
150.0	0.133	0.007	261.969	0.003%	99.995%
151.0	0.080	0.006	261.974	0.002%	99.998%

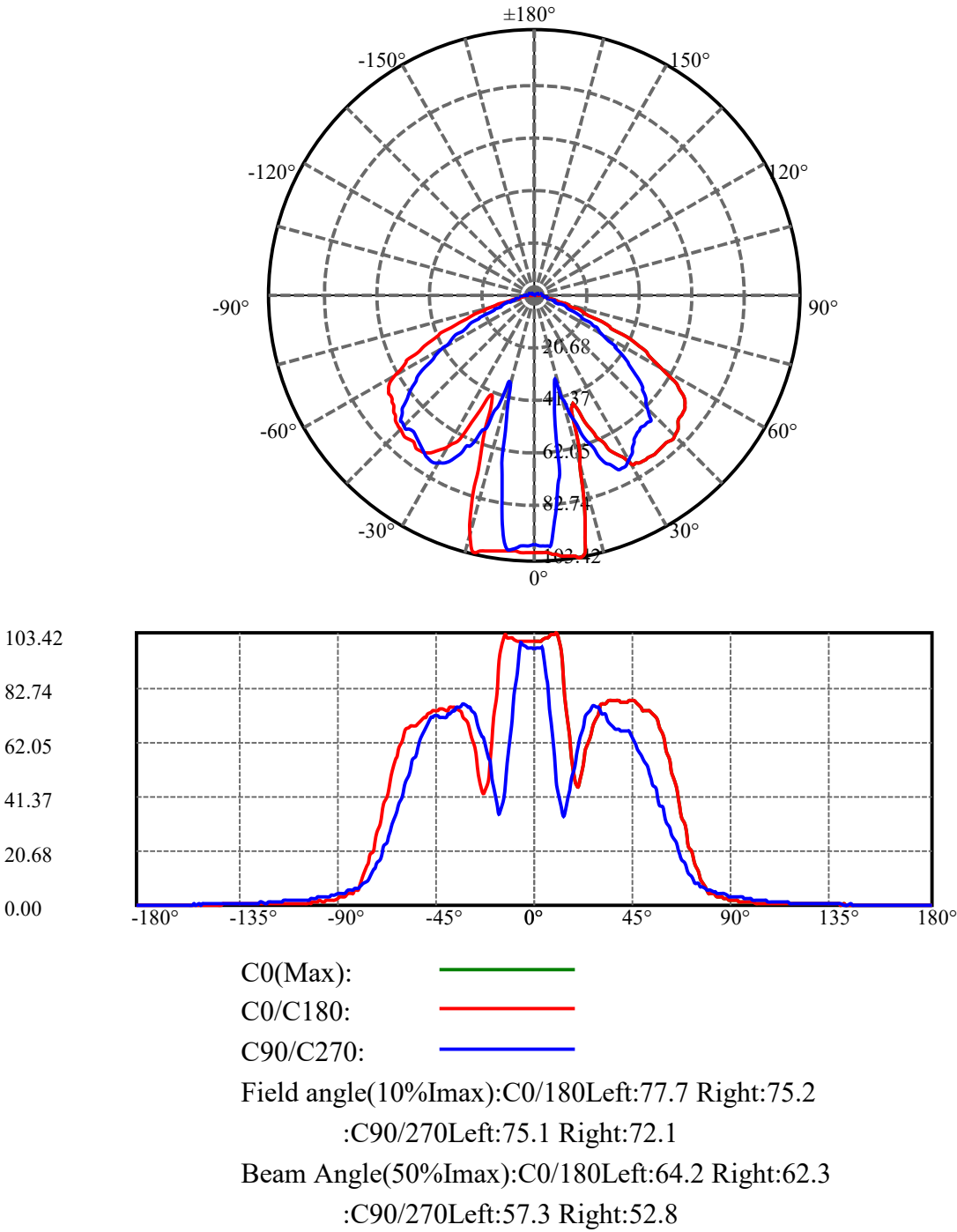
$\gamma(^{\circ})$	Average I(cd)	Zonal F(lm)	Sum F(lm)	Eff Flux(%)	Eff Sum(%)
152.0	0.053	0.003	261.978	0.001%	99.999%
153.0	0.000	0.001	261.979	0.001%	100.000%
154.0	0.027	0.001	261.980	0.000%	100.000%
155.0	0.000	0.001	261.980	0.000%	100.000%
156.0	0.000	0.000	261.980	0.000%	100.000%
157.0	0.000	0.000	261.980	0.000%	100.000%
158.0	0.000	0.000	261.980	0.000%	100.000%
159.0	0.000	0.000	261.980	0.000%	100.000%
160.0	0.000	0.000	261.980	0.000%	100.000%
161.0	0.000	0.000	261.980	0.000%	100.000%
162.0	0.000	0.000	261.980	0.000%	100.000%
163.0	0.000	0.000	261.980	0.000%	100.000%
164.0	0.000	0.000	261.980	0.000%	100.000%
165.0	0.000	0.000	261.980	0.000%	100.000%
166.0	0.000	0.000	261.980	0.000%	100.000%
167.0	0.000	0.000	261.980	0.000%	100.000%
168.0	0.000	0.000	261.980	0.000%	100.000%
169.0	0.000	0.000	261.980	0.000%	100.000%
170.0	0.000	0.000	261.980	0.000%	100.000%
171.0	0.000	0.000	261.980	0.000%	100.000%
172.0	0.000	0.000	261.980	0.000%	100.000%
173.0	0.000	0.000	261.980	0.000%	100.000%
174.0	0.000	0.000	261.980	0.000%	100.000%
175.0	0.000	0.000	261.980	0.000%	100.000%
176.0	0.000	0.000	261.980	0.000%	100.000%
177.0	0.000	0.000	261.980	0.000%	100.000%
178.0	0.000	0.000	261.980	0.000%	100.000%
179.0	0.000	0.000	261.980	0.000%	100.000%
180.0	0.000	0.000	261.980	0.000%	100.000%

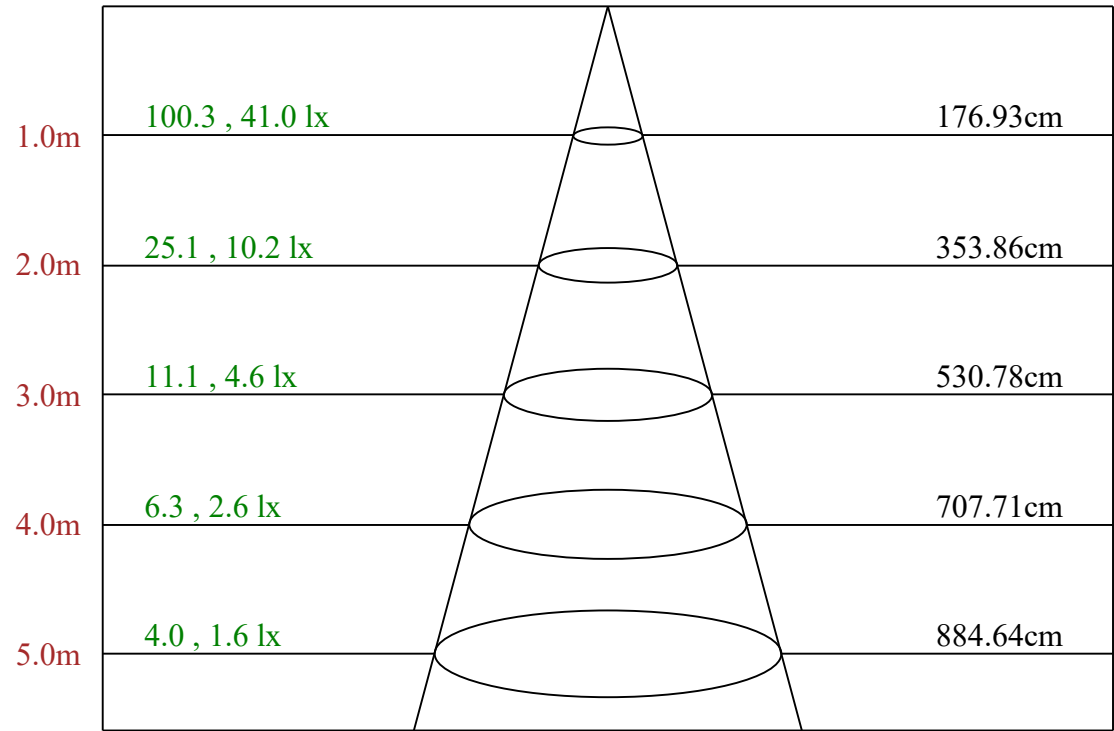
ZONAL LUMEN SUMMARY

Zone	Lumens	%Fixt
0-30	52.03	19.86%
0-40	93.62	35.74%
0-60	196.31	74.93%
0-90	252.95	96.55%
0-120	260.58	99.47%
0-180	261.98	100.00%
60-90	56.64	21.62%
90-120	7.63	2.91%
90-130	8.46	3.23%
90-150	9.02	3.44%
90-180	9.03	3.45%
0-63.02	209.58	80.00%

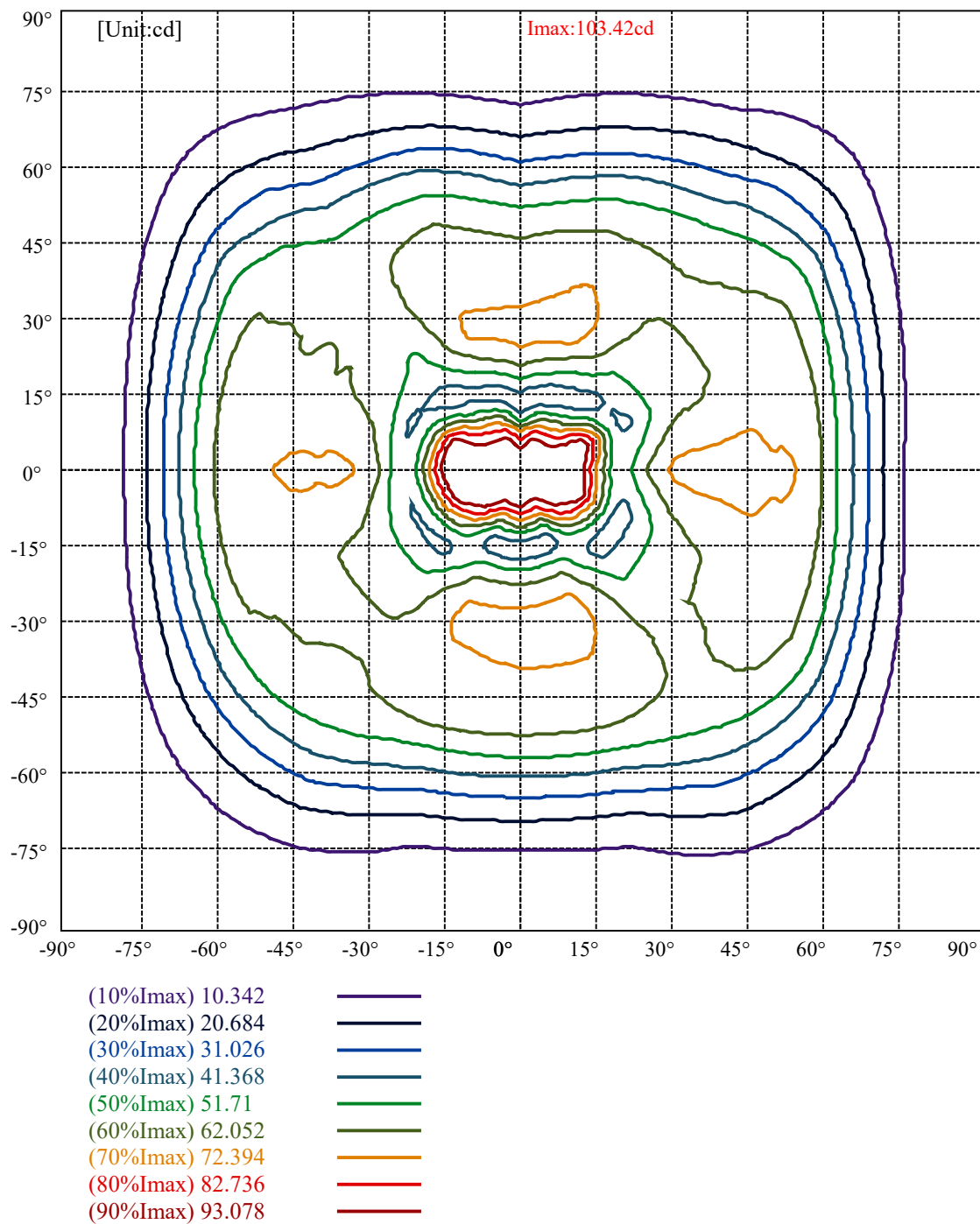
ZONAL LUMEN SUMMARY

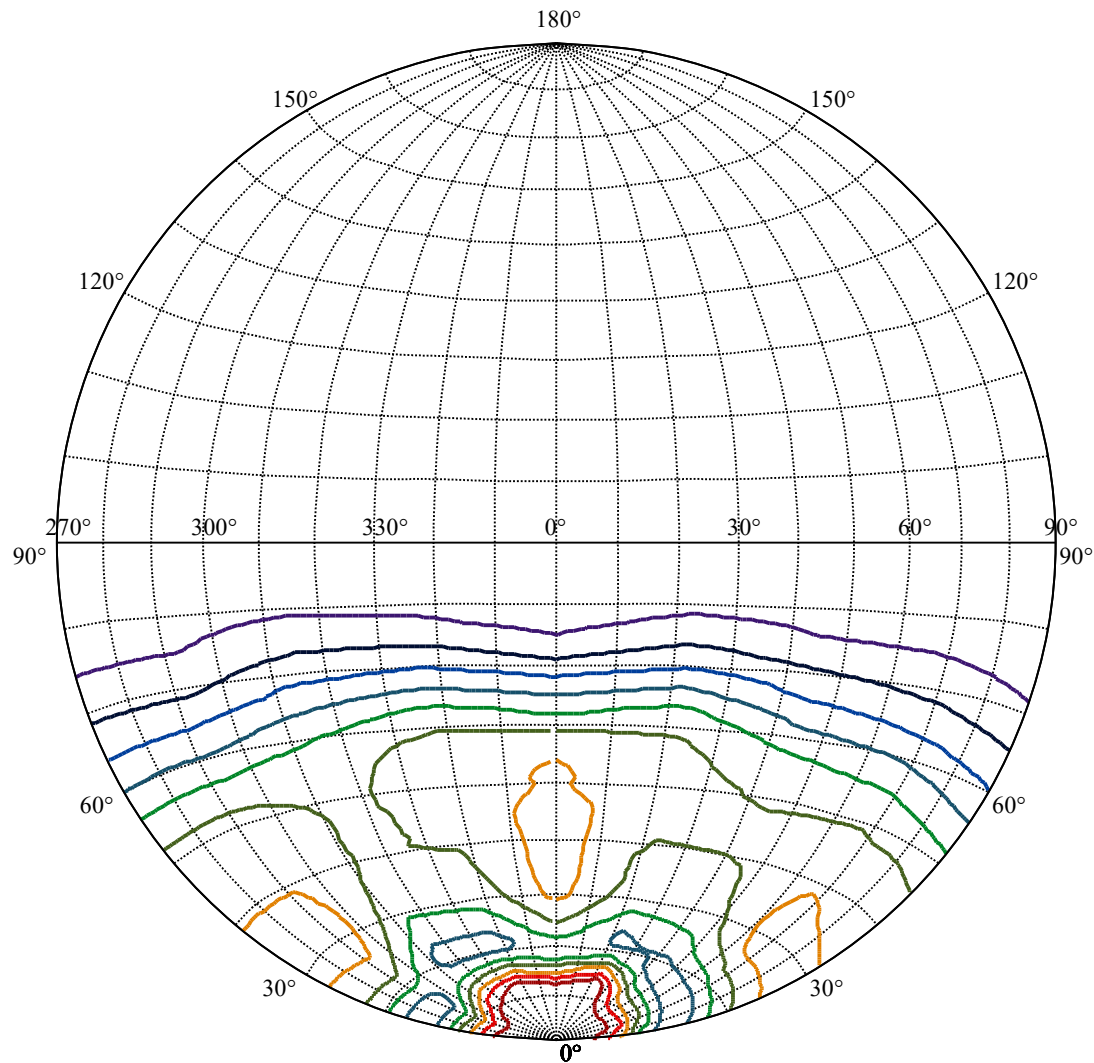
0-10	8.91
10-20	16.96
20-30	26.16
30-40	41.59
40-50	51.02
50-60	51.67
60-70	36.07
70-80	14.62
80-90	5.95
90-100	3.78
100-110	2.42
110-120	1.44
120-130	0.82
130-140	0.42
140-150	0.15
150-160	0.01
160-170	0.00
170-180	0.00





Max , Ave Beam angle of C0 plane 82.99





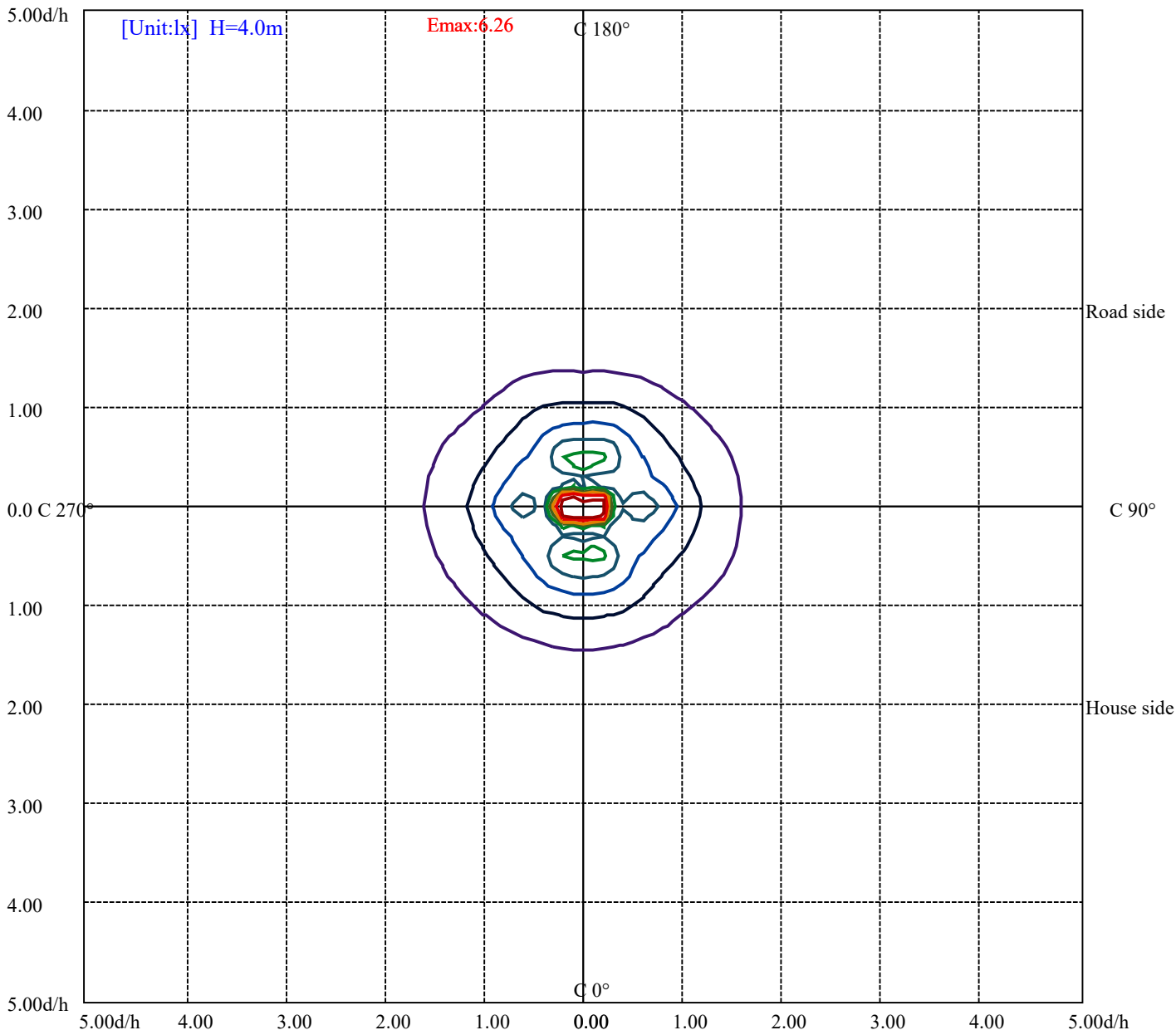
House

[Unit:cd]

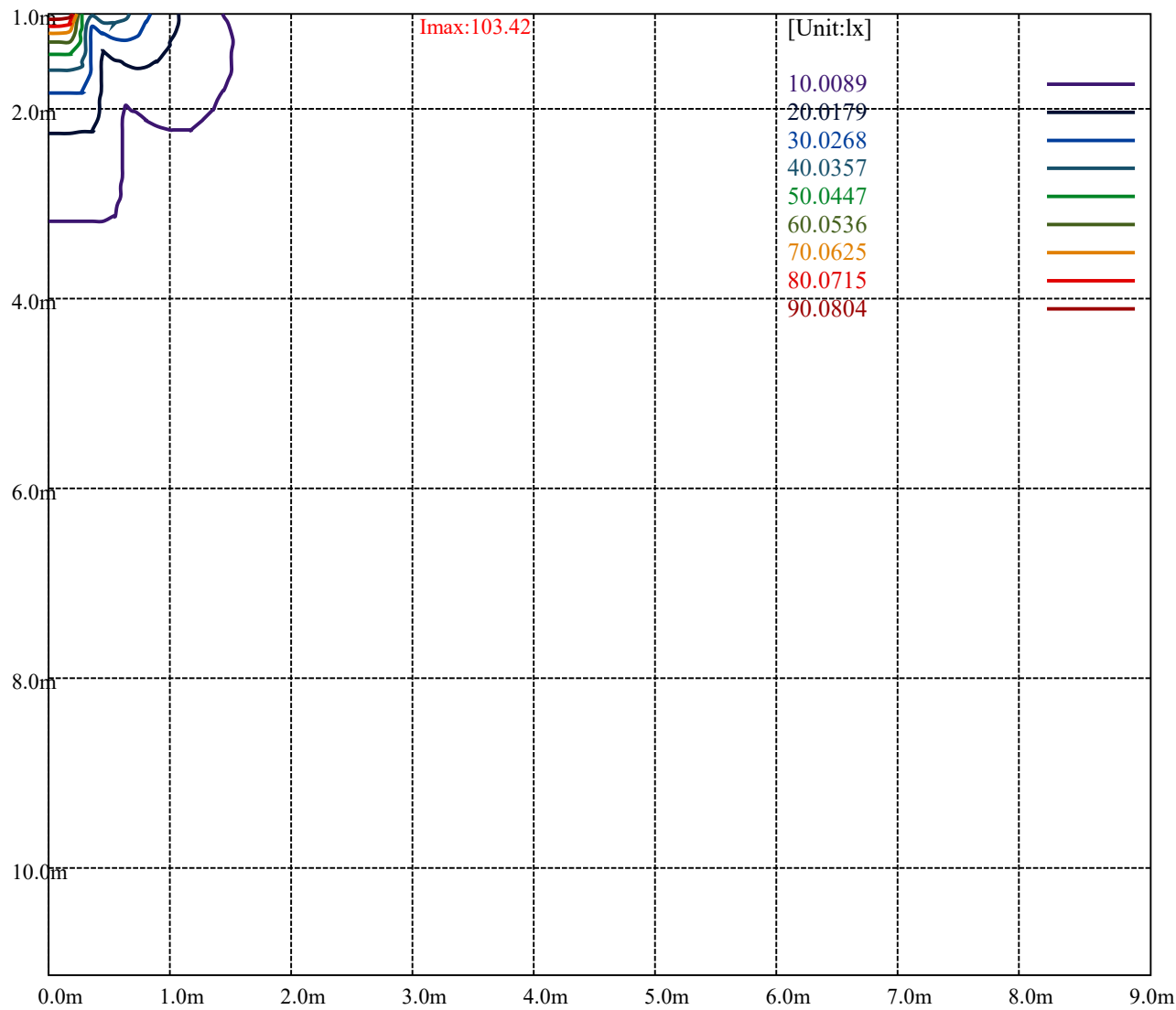
Road

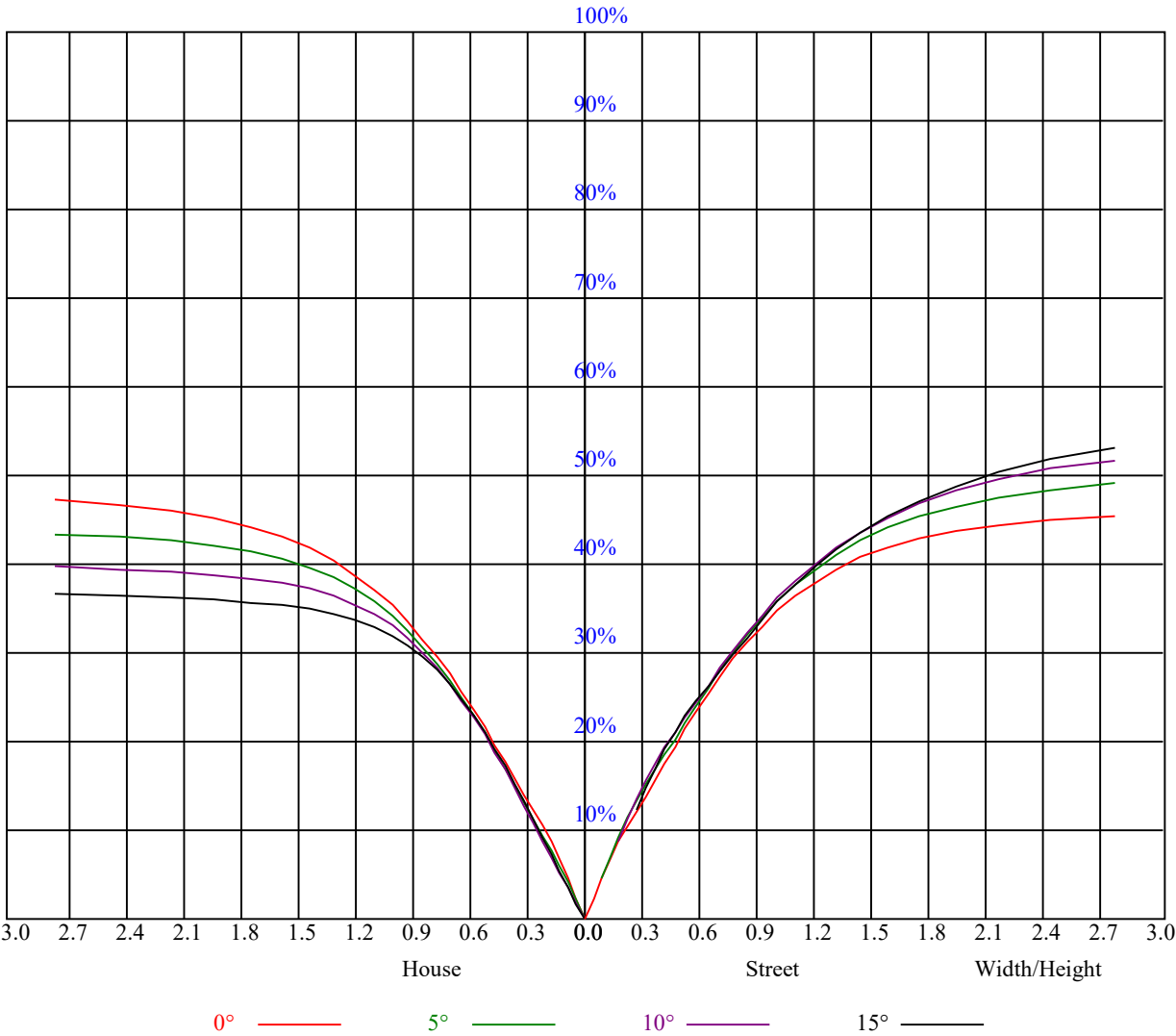
Imax:103.42

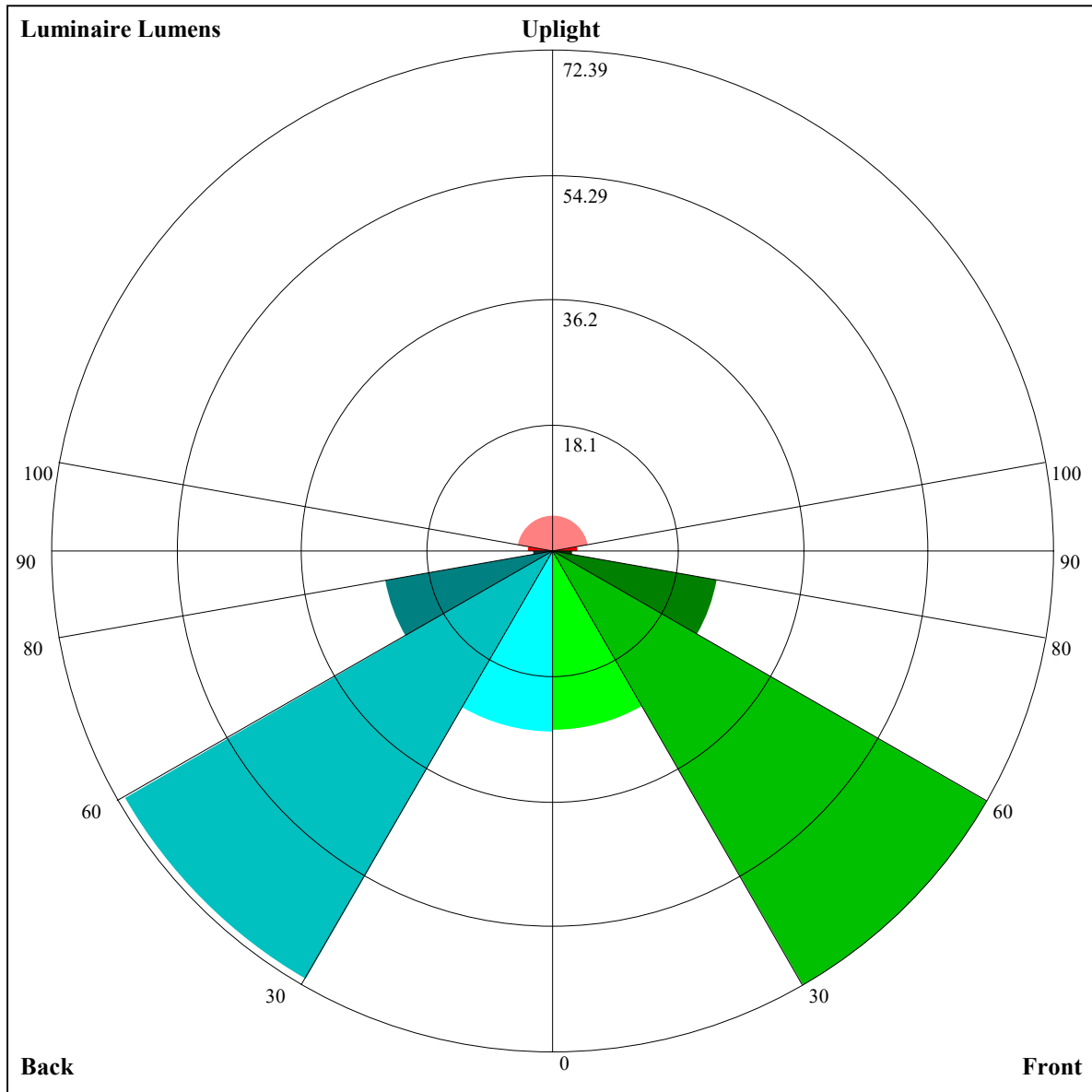
(10%Imax)	10.342	
(20%Imax)	20.684	
(30%Imax)	31.026	
(40%Imax)	41.368	
(50%Imax)	51.71	
(60%Imax)	62.052	
(70%Imax)	72.394	
(80%Imax)	82.736	
(90%Imax)	93.078	



(10%Emax)	0.6255562	
(20%Emax)	1.251112	
(30%Emax)	1.876675	
(40%Emax)	2.502231	
(50%Emax)	3.127788	
(60%Emax)	3.753344	
(70%Emax)	4.378906	
(80%Emax)	5.004463	
(90%Emax)	5.630019	







Luminaire Lumens:

FL=25.97,FM=72.39,FH=24.19,FVH=2.9

BL=26.19,BM=71.37,BH=24.6,BVH=2.96

UL=3.76,UH=5.23

BUG Rating:B0-U1-G0

Intensity data(cd)

C/γ(°)	0.0	1.0	2.0	3.0	4.0	5.0	6.0	7.0	8.0
0.0	100.02	100.02	100.44	100.44	100.87	101.29	101.72	102.14	102.57
22.5	98.74	98.74	98.74	98.74	98.74	99.16	99.16	99.59	100.02
45.0	97.89	97.89	98.31	98.31	98.74	98.74	97.89	93.21	88.52
67.5	97.89	97.46	97.46	97.89	97.89	97.89	96.18	90.65	86.40
90.0	97.04	97.46	97.46	97.46	97.04	87.67	83.42	74.48	69.37
112.5	97.04	97.04	97.04	97.04	97.04	97.46	97.46	92.78	86.40
135.0	97.04	97.04	97.04	97.04	97.04	97.46	97.46	95.33	92.35
157.5	97.04	96.61	96.61	96.61	96.61	96.61	97.04	97.04	97.46
180.0	100.02	100.02	100.02	100.02	100.02	100.02	100.02	100.44	100.44
202.5	98.74	98.74	98.74	99.16	99.16	99.59	100.02	100.44	100.44
225.0	97.89	97.89	97.89	98.31	98.74	99.16	99.16	100.02	100.44
247.5	97.89	97.89	98.31	98.74	99.59	100.02	97.46	90.23	82.57
270.0	97.04	97.46	97.46	97.89	98.31	99.16	99.59	95.33	88.10
292.5	97.04	97.46	98.31	98.31	99.16	98.74	94.48	86.40	82.14
315.0	97.04	97.04	97.46	97.46	97.89	98.31	98.74	99.59	99.16
337.5	97.04	97.04	97.46	97.46	97.89	98.31	98.74	99.16	99.59
360.0	100.02	100.02	100.44	100.44	100.87	101.29	101.72	102.14	102.57
C/γ(°)	9.0	10.0	11.0	12.0	13.0	14.0	15.0	16.0	17.0
0.0	102.99	103.42	102.14	96.61	88.52	79.16	68.95	63.41	56.18
22.5	100.44	100.87	101.29	101.72	100.87	93.63	84.27	78.31	67.67
45.0	82.57	75.33	71.50	64.69	58.31	52.35	45.11	42.56	38.73
67.5	73.63	65.97	60.86	51.50	44.26	39.15	35.32	34.47	37.45
90.0	56.60	46.82	42.99	37.45	34.05	34.90	40.86	43.41	48.09
112.5	78.74	71.07	66.39	56.60	48.94	43.41	38.30	37.45	37.03
135.0	87.67	82.57	76.61	69.37	62.99	57.03	49.37	45.96	41.71
157.5	97.89	97.89	98.31	98.74	99.59	98.74	90.23	80.01	70.65
180.0	100.87	101.29	101.29	101.72	102.57	101.72	96.18	91.08	80.01
202.5	101.29	102.14	102.57	102.57	101.29	94.06	82.99	77.03	68.10
225.0	97.89	93.21	90.23	82.99	76.18	70.22	63.41	59.58	52.77
247.5	73.63	63.41	58.73	50.65	44.69	40.01	37.03	37.03	40.43
270.0	79.59	70.65	64.69	54.05	45.96	40.43	36.18	34.90	38.30
292.5	73.63	64.69	57.03	48.09	42.56	38.30	36.18	37.03	41.71
315.0	96.61	91.93	88.95	82.57	76.18	69.80	62.14	56.18	49.79
337.5	100.44	100.87	101.72	100.87	96.61	87.25	75.76	70.22	61.29
360.0	102.99	103.42	102.14	96.61	88.52	79.16	68.95	63.41	56.18
C/γ(°)	18.0	19.0	20.0	21.0	22.0	23.0	24.0	25.0	26.0
0.0	47.24	45.54	44.69	47.67	53.20	58.31	60.43	63.41	66.39
22.5	55.75	51.92	45.11	40.86	39.58	40.01	41.28	44.69	47.67
45.0	36.18	36.18	39.58	41.28	44.69	47.24	48.52	49.79	51.92
67.5	41.71	45.96	50.65	52.77	57.03	62.14	63.84	68.52	71.50
90.0	52.77	57.03	60.43	63.84	67.24	71.07	72.35	74.05	75.33
112.5	42.56	45.11	49.79	54.48	57.88	61.29	62.99	66.82	69.80
135.0	38.30	35.75	36.18	37.45	40.43	42.99	44.69	45.96	46.39
157.5	61.29	56.60	48.94	44.26	41.71	40.43	41.28	45.54	48.94
180.0	71.07	62.56	55.33	47.67	43.84	42.56	43.41	49.37	55.33
202.5	59.58	52.77	46.39	43.84	40.43	41.28	42.56	45.11	47.67
225.0	47.24	42.99	39.58	38.30	39.58	42.56	43.84	47.24	48.94
247.5	45.11	50.22	54.48	57.88	60.86	64.27	65.97	68.10	70.22
270.0	45.11	48.09	54.48	56.18	61.29	63.41	64.27	67.67	70.22
292.5	46.39	51.92	57.46	60.01	63.41	66.39	68.52	70.65	72.78
315.0	44.69	42.13	38.73	37.45	37.88	40.43	42.13	44.69	47.24
337.5	53.63	46.82	40.86	38.73	37.03	40.43	41.71	44.69	46.39
360.0	47.24	45.54	44.69	47.67	53.20	58.31	60.43	63.41	66.39

Intensity data(cd)

C/ γ (°)	27.0	28.0	29.0	30.0	31.0	32.0	33.0	34.0	35.0
0.0	68.52	71.07	72.35	75.76	76.18	76.61	77.03	77.46	77.46
22.5	49.79	52.35	53.20	54.48	55.75	57.03	57.88	58.31	57.88
45.0	53.20	54.90	55.75	56.60	57.46	58.31	59.58	60.01	60.43
67.5	74.48	76.18	76.61	77.46	77.88	77.46	77.03	76.61	75.33
90.0	75.76	75.33	74.91	74.05	72.78	72.35	70.65	69.37	68.10
112.5	71.93	73.20	73.20	73.20	72.78	72.78	72.35	71.50	71.07
135.0	48.09	48.94	49.37	50.22	52.35	53.63	54.90	55.33	56.60
157.5	52.35	55.33	57.88	59.16	59.58	60.01	60.43	60.86	61.29
180.0	59.58	63.84	65.97	68.52	69.80	71.50	73.20	74.05	74.48
202.5	49.79	53.20	54.48	56.18	57.46	58.31	59.58	59.58	60.01
225.0	51.50	52.77	53.63	55.33	56.18	56.60	57.03	58.31	59.58
247.5	71.93	73.20	73.63	74.48	74.91	74.91	74.91	74.05	73.20
270.0	72.35	74.05	74.91	75.33	75.76	76.18	75.76	75.33	74.91
292.5	74.48	75.76	76.61	77.03	77.03	77.03	76.61	76.18	75.33
315.0	48.52	50.22	51.50	52.77	54.48	54.90	55.75	56.60	57.46
337.5	48.94	51.50	52.77	54.05	55.75	56.60	57.88	58.73	59.58
360.0	68.52	71.07	72.35	75.76	76.18	76.61	77.03	77.46	77.46
C/ γ (°)	36.0	37.0	38.0	39.0	40.0	41.0	42.0	43.0	44.0
0.0	77.46	77.46	77.46	77.03	77.03	77.03	77.03	77.46	77.46
22.5	58.31	58.31	59.16	60.86	61.71	62.14	62.56	62.56	62.56
45.0	60.86	60.86	61.71	62.14	62.14	62.56	62.99	62.99	62.56
67.5	74.48	74.05	72.78	71.93	71.07	70.22	69.80	69.80	69.37
90.0	67.24	66.82	66.82	66.39	66.39	66.39	66.39	66.39	64.69
112.5	70.22	69.37	68.10	67.24	66.82	66.39	66.39	66.82	66.82
135.0	57.46	58.31	59.16	59.58	59.58	60.01	59.58	60.01	59.58
157.5	62.14	62.14	62.99	62.56	62.14	62.56	62.99	62.99	62.99
180.0	74.91	75.33	74.91	74.05	74.05	74.48	74.48	74.48	74.05
202.5	60.43	60.43	61.29	62.14	62.56	62.99	63.84	64.69	64.69
225.0	60.43	60.86	62.14	62.99	63.41	63.41	63.84	63.41	62.99
247.5	71.93	71.50	71.07	71.07	71.07	70.65	70.22	70.22	70.65
270.0	74.05	73.63	72.78	72.35	71.50	71.07	71.07	71.50	71.93
292.5	74.05	73.63	72.78	72.35	71.93	71.93	71.93	71.93	71.50
315.0	58.31	58.73	59.58	60.01	60.01	60.43	60.01	60.01	60.01
337.5	60.43	60.86	61.29	62.14	62.99	63.84	63.84	64.27	64.27
360.0	77.46	77.46	77.46	77.03	77.03	77.03	77.03	77.46	77.46
C/ γ (°)	45.0	46.0	47.0	48.0	49.0	50.0	51.0	52.0	53.0
0.0	77.46	77.03	76.18	74.91	74.05	73.63	74.05	73.63	73.20
22.5	62.99	63.41	63.41	63.84	63.84	63.84	64.27	64.27	64.69
45.0	62.56	62.14	62.14	62.14	61.71	61.29	60.86	60.01	58.73
67.5	68.52	67.67	66.82	62.99	62.14	60.43	58.73	57.03	55.33
90.0	62.56	60.86	59.16	57.46	55.75	54.90	52.77	50.22	48.09
112.5	66.82	66.39	65.97	64.69	63.41	62.56	60.43	58.73	57.03
135.0	59.58	59.58	59.16	59.16	58.73	57.88	57.03	56.18	55.33
157.5	62.56	62.14	62.14	62.14	62.56	62.56	62.99	62.99	62.56
180.0	74.05	73.63	73.20	72.78	71.50	71.07	70.22	69.37	68.95
202.5	64.69	64.27	63.84	63.84	63.84	63.41	63.41	63.41	62.56
225.0	62.99	62.56	62.14	61.29	60.86	60.86	60.43	60.01	59.58
247.5	70.65	70.22	69.80	68.95	67.24	66.39	63.84	62.14	59.58
270.0	71.93	71.50	71.50	68.95	67.67	66.39	63.84	61.71	59.16
292.5	71.50	71.07	70.65	69.37	68.10	66.39	63.84	62.56	59.58
315.0	60.01	60.01	60.01	60.01	59.58	59.58	59.58	59.16	58.73
337.5	64.69	64.69	65.12	65.97	66.82	67.24	67.24	67.24	67.24
360.0	77.46	77.03	76.18	74.91	74.05	73.63	74.05	73.63	73.20

Intensity data(cd)

C/ γ (°)	54.0	55.0	56.0	57.0	58.0	59.0	60.0	61.0	62.0
0.0	72.35	71.50	69.80	67.24	65.12	62.14	58.73	55.33	50.65
22.5	64.69	64.69	64.27	63.41	62.99	61.29	60.01	57.88	55.75
45.0	57.03	56.18	54.48	52.77	50.22	48.09	45.54	43.41	40.43
67.5	53.63	52.35	48.94	46.82	44.26	42.56	40.86	37.03	34.47
90.0	45.54	44.26	40.43	37.88	37.03	34.05	31.49	29.37	27.24
112.5	55.75	53.63	51.50	48.94	47.67	45.11	42.99	40.43	37.88
135.0	53.20	52.35	50.22	48.52	46.82	44.26	43.41	40.01	38.73
157.5	62.56	62.14	62.14	62.14	61.71	60.86	59.58	57.46	54.90
180.0	68.10	68.10	68.10	67.67	66.82	65.12	62.14	59.58	56.60
202.5	62.14	62.14	61.71	61.29	61.29	60.01	58.73	55.75	52.35
225.0	59.16	58.73	57.03	55.75	54.90	53.20	50.22	48.52	46.39
247.5	57.03	55.75	51.92	48.52	47.24	44.26	42.13	39.58	35.75
270.0	56.60	55.33	52.35	49.37	46.82	44.26	41.28	38.73	35.75
292.5	57.03	55.75	53.63	50.65	48.09	44.69	42.99	39.15	37.45
315.0	58.31	57.88	56.60	55.75	54.90	53.20	51.50	48.94	46.39
337.5	67.24	67.24	66.82	66.39	64.69	62.56	61.71	59.58	57.03
360.0	72.35	71.50	69.80	67.24	65.12	62.14	58.73	55.33	50.65
C/ γ (°)	63.0	64.0	65.0	66.0	67.0	68.0	69.0	70.0	71.0
0.0	48.52	45.11	41.28	37.45	33.20	31.07	27.66	22.56	20.43
22.5	54.05	49.79	46.82	43.84	40.43	38.30	34.05	30.22	28.51
45.0	38.73	36.18	33.62	31.07	28.51	27.24	25.11	22.56	20.43
67.5	32.77	30.22	28.09	25.96	23.83	22.13	19.58	17.88	15.75
90.0	25.96	23.83	21.28	19.15	17.02	15.75	14.04	12.34	10.64
112.5	35.75	32.77	29.79	27.24	24.26	22.98	20.00	17.45	16.17
135.0	35.32	32.77	30.22	28.09	25.96	24.68	22.56	20.43	18.73
157.5	53.20	49.79	45.96	43.84	40.86	39.15	33.62	30.64	28.51
180.0	55.33	50.65	47.24	43.84	40.86	38.73	34.47	30.64	27.66
202.5	50.22	47.24	44.26	41.28	37.45	34.90	32.35	29.37	26.39
225.0	44.69	42.13	39.58	36.18	34.05	32.35	29.37	27.24	25.11
247.5	34.47	31.49	29.37	27.24	24.26	22.98	20.43	18.30	16.17
270.0	34.05	31.07	28.51	26.39	23.83	22.56	19.58	17.02	16.17
292.5	34.90	31.92	30.22	26.81	23.83	22.56	20.00	17.88	16.17
315.0	44.69	42.13	39.58	37.45	34.47	33.20	29.37	27.66	26.39
337.5	54.05	49.79	46.82	43.41	39.58	37.45	34.05	30.64	27.66
360.0	48.52	45.11	41.28	37.45	33.20	31.07	27.66	22.56	20.43
C/ γ (°)	72.0	73.0	74.0	75.0	76.0	77.0	78.0	79.0	80.0
0.0	17.88	15.32	12.77	10.21	8.94	6.81	5.53	4.68	4.26
22.5	25.11	22.56	19.58	17.45	15.75	13.62	11.49	9.36	8.09
45.0	17.45	16.17	13.19	11.07	10.21	9.36	8.51	8.09	6.81
67.5	13.62	13.19	11.49	10.21	8.94	8.51	8.09	7.66	6.81
90.0	9.79	8.51	8.09	6.81	6.81	6.38	5.96	5.53	5.53
112.5	14.04	12.77	11.49	10.21	9.79	8.51	8.09	7.66	7.66
135.0	16.60	15.75	14.04	11.49	10.64	9.36	8.51	8.09	6.81
157.5	25.11	22.56	19.58	17.45	16.17	13.19	11.49	9.79	8.09
180.0	24.26	20.85	19.15	15.75	14.47	11.49	9.36	7.66	5.96
202.5	22.98	20.85	18.73	16.60	14.04	11.92	10.21	8.51	7.66
225.0	22.13	20.00	17.88	16.17	14.90	12.34	11.07	9.36	8.51
247.5	14.47	12.77	11.49	9.79	9.36	8.51	8.09	8.09	7.66
270.0	14.04	13.19	10.64	9.79	8.94	8.09	7.66	6.81	6.38
292.5	14.04	12.77	11.49	10.21	8.94	8.51	8.09	7.66	6.81
315.0	23.83	21.28	19.15	17.45	16.17	13.62	11.92	10.21	8.94
337.5	24.26	22.13	19.15	15.32	14.04	11.92	10.64	8.51	7.66
360.0	17.88	15.32	12.77	10.21	8.94	6.81	5.53	4.68	4.26

Intensity data(cd)

Appendix Page: 19 Total:22

C/γ(°)	81.0	82.0	83.0	84.0	85.0	86.0	87.0	88.0	89.0
0.0	4.26	3.83	3.40	3.40	2.98	2.55	2.55	2.13	1.70
22.5	6.81	6.38	6.38	5.96	5.53	5.53	5.11	4.68	4.68
45.0	6.81	6.81	6.38	5.96	5.53	5.53	5.11	4.68	4.68
67.5	6.81	6.81	6.38	6.38	5.96	5.96	5.11	5.11	5.11
90.0	5.11	5.11	4.68	4.68	4.26	4.26	3.83	3.40	3.40
112.5	6.81	6.38	6.38	5.96	5.53	5.53	5.53	5.11	4.68
135.0	6.81	6.38	5.96	5.96	5.53	5.53	5.11	5.11	4.68
157.5	7.66	6.81	6.38	5.96	5.53	5.53	5.11	4.68	4.68
180.0	5.53	4.68	4.26	4.26	3.83	3.40	3.40	2.98	2.55
202.5	7.66	6.81	6.38	5.96	5.53	5.53	5.11	4.68	4.68
225.0	8.51	7.66	6.81	6.81	6.38	5.96	5.53	5.53	5.11
247.5	6.81	6.81	6.38	5.96	5.96	5.53	5.11	5.11	4.68
270.0	6.38	5.96	5.96	5.53	5.11	4.68	4.68	4.26	4.26
292.5	6.81	6.38	6.38	5.96	5.53	5.53	5.11	5.11	4.68
315.0	8.51	7.66	7.66	6.81	6.38	5.96	5.96	5.53	5.53
337.5	6.81	6.38	5.96	5.53	5.53	5.11	5.11	4.68	4.68
360.0	4.26	3.83	3.40	3.40	2.98	2.55	2.55	2.13	1.70
C/γ(°)	90.0	91.0	92.0	93.0	94.0	95.0	96.0	97.0	98.0
0.0	1.70	1.70	1.70	1.28	1.28	1.28	1.28	1.28	1.28
22.5	4.26	4.26	3.83	3.83	3.83	3.40	3.40	3.40	2.98
45.0	4.68	4.68	4.26	4.26	4.26	3.83	3.83	3.83	3.40
67.5	4.68	4.68	4.68	4.26	4.26	4.26	3.83	3.83	3.83
90.0	3.40	2.98	2.98	2.98	2.98	2.55	2.55	2.55	2.55
112.5	4.68	4.68	4.26	4.26	3.83	3.83	3.83	3.83	3.40
135.0	4.68	4.68	4.26	4.26	3.83	3.83	3.83	3.40	3.40
157.5	4.26	4.26	3.83	3.83	3.83	3.40	3.40	3.40	2.98
180.0	2.13	1.70	1.70	1.70	1.70	1.28	1.28	1.70	1.28
202.5	4.26	4.26	3.83	3.83	3.83	3.40	3.40	3.40	2.98
225.0	5.11	5.11	4.68	4.68	4.26	4.26	4.26	3.83	3.83
247.5	4.68	4.68	4.26	4.26	4.26	4.26	3.83	3.83	3.40
270.0	3.83	3.83	3.83	3.40	3.40	2.98	2.98	2.98	2.98
292.5	4.68	4.26	4.26	4.26	4.26	3.83	3.83	3.83	3.40
315.0	5.11	5.11	4.68	4.68	4.26	4.26	4.26	4.26	3.83
337.5	4.26	4.26	3.83	3.83	3.40	3.40	3.40	2.98	2.98
360.0	1.70	1.70	1.70	1.28	1.28	1.28	1.28	1.28	1.28
C/γ(°)	99.0	100.0	101.0	102.0	103.0	104.0	105.0	106.0	107.0
0.0	1.28	0.85	0.85	0.85	0.85	0.85	0.85	0.85	0.85
22.5	2.98	2.98	2.55	2.55	2.55	2.13	2.13	2.13	2.13
45.0	3.40	3.40	2.98	2.98	2.98	2.55	2.55	2.55	2.55
67.5	3.83	3.40	2.98	2.98	2.98	2.98	2.98	2.55	2.55
90.0	2.13	2.13	1.70	1.70	1.70	1.70	1.70	1.28	1.28
112.5	3.40	2.98	2.98	2.98	2.98	2.98	2.55	2.55	2.55
135.0	3.40	2.98	2.98	2.98	2.98	2.55	2.55	2.13	2.55
157.5	2.98	2.55	2.55	2.55	2.13	2.13	2.13	1.70	1.70
180.0	1.28	1.28	0.85	1.28	0.85	0.85	0.85	0.85	0.85
202.5	2.98	2.98	2.55	2.55	2.55	2.13	2.13	2.13	2.13
225.0	3.40	3.40	3.40	3.40	3.40	3.40	2.98	2.98	2.98
247.5	3.40	3.40	3.40	3.40	2.98	2.98	2.98	2.55	2.55
270.0	2.55	2.55	2.55	2.13	2.13	2.13	2.13	1.70	1.70
292.5	3.40	3.40	3.40	2.98	2.98	2.98	2.98	2.55	2.55
315.0	3.83	3.83	3.40	3.40	3.40	3.40	2.98	2.98	2.98
337.5	2.98	2.55	2.55	2.55	2.13	2.13	2.13	2.13	2.13
360.0	1.28	0.85	0.85	0.85	0.85	0.85	0.85	0.85	0.85

Intensity data(cd)

Appendix Page: 20 Total:22

C/γ(°)	108.0	109.0	110.0	111.0	112.0	113.0	114.0	115.0	116.0
0.0	0.85	0.85	0.85	0.85	0.85	0.43	0.85	0.43	0.43
22.5	2.13	1.70	1.70	1.70	1.70	1.70	1.28	1.28	1.28
45.0	2.13	2.13	2.13	2.13	1.70	1.70	1.70	1.70	1.70
67.5	2.55	2.13	2.13	1.70	2.13	1.70	1.70	1.70	1.70
90.0	1.28	1.28	1.28	1.28	1.28	1.28	1.28	1.28	0.85
112.5	2.13	2.13	2.13	1.70	1.70	1.70	1.70	1.70	1.28
135.0	2.55	2.13	2.13	1.70	1.70	1.70	1.70	1.70	1.28
157.5	1.70	1.70	1.70	1.28	1.28	1.28	1.28	1.28	1.28
180.0	0.85	0.85	0.85	0.85	0.85	0.85	0.85	0.43	0.43
202.5	2.13	2.13	1.70	1.70	1.70	1.70	1.28	1.28	1.28
225.0	2.98	2.55	2.55	2.55	2.55	2.13	2.13	2.13	2.13
247.5	2.55	2.55	2.13	2.13	2.13	2.13	2.13	2.13	1.70
270.0	1.70	1.70	1.70	1.70	1.70	1.70	1.28	1.28	1.28
292.5	2.55	2.55	2.13	2.13	2.13	2.13	2.13	1.70	1.70
315.0	2.98	2.55	2.55	2.13	1.70	1.28	1.28	1.28	1.28
337.5	1.70	1.70	1.70	1.70	1.70	1.70	1.28	1.28	1.28
360.0	0.85	0.85	0.85	0.85	0.85	0.43	0.85	0.43	0.43
C/γ(°)	117.0	118.0	119.0	120.0	121.0	122.0	123.0	124.0	125.0
0.0	0.43	0.43	0.43	0.43	0.43	0.43	0.43	0.43	0.43
22.5	1.28	1.28	1.28	0.85	1.28	0.85	0.85	0.85	0.85
45.0	1.70	1.70	1.28	1.28	1.28	1.28	1.28	0.85	0.85
67.5	1.28	1.28	1.28	1.28	1.28	1.28	1.28	0.85	0.85
90.0	0.85	0.85	0.85	0.85	0.85	0.85	0.85	0.43	0.43
112.5	1.70	1.28	1.28	1.28	1.28	0.85	0.85	0.85	0.85
135.0	1.28	1.28	1.28	1.28	1.28	1.28	0.85	1.28	0.85
157.5	1.28	1.28	1.28	1.28	0.85	0.85	0.85	0.85	0.85
180.0	0.43	0.43	0.43	0.43	0.43	0.43	0.43	0.43	0.43
202.5	1.28	1.28	1.28	1.28	1.28	1.28	1.28	0.85	0.85
225.0	2.13	2.13	1.70	1.70	1.70	1.28	1.28	1.28	0.85
247.5	1.70	1.70	1.70	1.70	1.28	1.28	1.28	1.28	1.28
270.0	1.28	1.28	1.28	1.28	0.85	0.85	1.28	1.28	0.85
292.5	1.70	1.70	1.70	1.70	1.70	1.28	1.28	1.28	1.28
315.0	1.28	1.28	0.85	1.28	1.28	1.28	1.28	1.28	1.28
337.5	1.28	1.28	1.28	0.85	0.85	0.85	0.85	0.85	0.85
360.0	0.43	0.43	0.43	0.43	0.43	0.43	0.43	0.43	0.43
C/γ(°)	126.0	127.0	128.0	129.0	130.0	131.0	132.0	133.0	134.0
0.0	0.43	0.43	0.43	0.43	0.43	0.43	0.43	0.43	0.43
22.5	0.85	0.85	0.85	0.85	0.43	0.43	0.43	0.43	0.43
45.0	0.85	0.85	0.85	0.85	0.85	0.85	0.85	0.43	0.43
67.5	0.85	0.85	0.85	0.85	0.85	0.43	0.85	0.43	0.43
90.0	0.43	0.43	0.43	0.43	0.43	0.43	0.43	0.43	0.43
112.5	0.85	0.85	0.85	0.85	0.85	0.43	0.43	0.43	0.43
135.0	0.85	0.85	0.85	0.85	0.85	0.85	0.43	0.43	0.43
157.5	0.85	0.85	0.85	0.85	0.43	0.43	0.43	0.43	0.43
180.0	0.43	0.43	0.43	0.43	0.43	0.43	0.43	0.43	0.43
202.5	0.85	0.85	0.85	0.85	0.85	0.43	0.43	0.43	0.43
225.0	0.85	0.85	0.85	0.85	0.85	0.43	0.85	0.85	0.43
247.5	1.28	0.85	1.28	0.85	0.85	0.85	0.85	0.85	0.85
270.0	0.85	0.85	0.85	0.85	0.85	0.85	0.85	0.85	0.85
292.5	1.28	0.85	1.28	0.85	0.85	0.85	0.85	0.85	0.85
315.0	0.85	1.28	1.28	0.85	1.28	0.85	0.85	0.85	0.85
337.5	0.85	0.85	0.85	0.85	0.85	0.43	0.43	0.43	0.43
360.0	0.43	0.43	0.43	0.43	0.43	0.43	0.43	0.43	0.43

Intensity data(cd)

Appendix Page: 21 Total:22

C/ γ (°)	135.0	136.0	137.0	138.0	139.0	140.0	141.0	142.0	143.0
0.0	0.43	0.43	0.43	0.43	0.00	0.43	0.00	0.00	0.00
22.5	0.43	0.43	0.43	0.43	0.43	0.43	0.43	0.00	0.43
45.0	0.43	0.43	0.43	0.43	0.43	0.43	0.43	0.43	0.43
67.5	0.43	0.43	0.43	0.43	0.43	0.43	0.43	0.43	0.43
90.0	0.43	0.43	0.43	0.43	0.43	0.00	0.00	0.00	0.43
112.5	0.43	0.43	0.43	0.43	0.43	0.43	0.43	0.43	0.43
135.0	0.43	0.43	0.43	0.43	0.43	0.43	0.43	0.43	0.43
157.5	0.43	0.43	0.43	0.43	0.43	0.43	0.43	0.43	0.43
180.0	0.43	0.43	0.43	0.43	0.43	0.43	0.43	0.00	0.00
202.5	0.43	0.43	0.43	0.43	0.43	0.43	0.43	0.43	0.43
225.0	0.43	0.43	0.43	0.43	0.85	0.43	0.43	0.43	0.43
247.5	0.85	0.85	0.85	0.43	0.43	0.43	0.43	0.43	0.43
270.0	0.85	0.43	0.43	0.43	0.43	0.43	0.43	0.43	0.43
292.5	0.85	0.85	0.85	0.43	0.85	0.43	0.43	0.43	0.43
315.0	0.85	0.85	0.85	0.85	0.85	0.43	0.85	0.43	0.43
337.5	0.43	0.43	0.43	0.43	0.43	0.43	0.00	0.00	0.43
360.0	0.43	0.43	0.43	0.43	0.00	0.43	0.00	0.00	0.00
C/ γ (°)	144.0	145.0	146.0	147.0	148.0	149.0	150.0	151.0	152.0
0.0	0.00	0.00	0.00	0.00	0.00	0.00	0.00	0.00	0.00
22.5	0.00	0.00	0.00	0.00	0.00	0.00	0.00	0.00	0.00
45.0	0.43	0.00	0.00	0.00	0.00	0.00	0.00	0.00	0.00
67.5	0.43	0.00	0.00	0.00	0.00	0.00	0.00	0.00	0.00
90.0	0.00	0.00	0.00	0.00	0.00	0.00	0.00	0.00	0.00
112.5	0.43	0.00	0.43	0.00	0.00	0.00	0.00	0.00	0.00
135.0	0.43	0.00	0.00	0.00	0.00	0.00	0.00	0.00	0.00
157.5	0.43	0.00	0.00	0.00	0.00	0.00	0.00	0.00	0.00
180.0	0.00	0.00	0.00	0.00	0.00	0.00	0.00	0.00	0.00
202.5	0.43	0.00	0.00	0.00	0.00	0.00	0.00	0.00	0.00
225.0	0.43	0.43	0.43	0.43	0.43	0.00	0.43	0.43	0.00
247.5	0.43	0.43	0.43	0.43	0.43	0.43	0.43	0.00	0.00
270.0	0.43	0.43	0.43	0.43	0.43	0.43	0.43	0.00	0.43
292.5	0.43	0.43	0.43	0.43	0.43	0.43	0.43	0.43	0.00
315.0	0.43	0.43	0.43	0.43	0.43	0.43	0.43	0.43	0.43
337.5	0.00	0.43	0.00	0.00	0.00	0.00	0.00	0.00	0.00
360.0	0.00	0.00	0.00	0.00	0.00	0.00	0.00	0.00	0.00
C/ γ (°)	153.0	154.0	155.0	156.0	157.0	158.0	159.0	160.0	161.0
0.0	0.00	0.00	0.00	0.00	0.00	0.00	0.00	0.00	0.00
22.5	0.00	0.00	0.00	0.00	0.00	0.00	0.00	0.00	0.00
45.0	0.00	0.00	0.00	0.00	0.00	0.00	0.00	0.00	0.00
67.5	0.00	0.00	0.00	0.00	0.00	0.00	0.00	0.00	0.00
90.0	0.00	0.00	0.00	0.00	0.00	0.00	0.00	0.00	0.00
112.5	0.00	0.00	0.00	0.00	0.00	0.00	0.00	0.00	0.00
135.0	0.00	0.00	0.00	0.00	0.00	0.00	0.00	0.00	0.00
157.5	0.00	0.00	0.00	0.00	0.00	0.00	0.00	0.00	0.00
180.0	0.00	0.00	0.00	0.00	0.00	0.00	0.00	0.00	0.00
202.5	0.00	0.00	0.00	0.00	0.00	0.00	0.00	0.00	0.00
225.0	0.00	0.00	0.00	0.00	0.00	0.00	0.00	0.00	0.00
247.5	0.00	0.00	0.00	0.00	0.00	0.00	0.00	0.00	0.00
270.0	0.00	0.43	0.00	0.00	0.00	0.00	0.00	0.00	0.00
292.5	0.00	0.00	0.00	0.00	0.00	0.00	0.00	0.00	0.00
315.0	0.00	0.00	0.00	0.00	0.00	0.00	0.00	0.00	0.00
337.5	0.00	0.00	0.00	0.00	0.00	0.00	0.00	0.00	0.00
360.0	0.00	0.00	0.00	0.00	0.00	0.00	0.00	0.00	0.00

Intensity data(cd)

Appendix Page: 22 Total:22

C/ γ (°)	162.0	163.0	164.0	165.0	166.0	167.0	168.0	169.0	170.0
0.0	0.00	0.00	0.00	0.00	0.00	0.00	0.00	0.00	0.00
22.5	0.00	0.00	0.00	0.00	0.00	0.00	0.00	0.00	0.00
45.0	0.00	0.00	0.00	0.00	0.00	0.00	0.00	0.00	0.00
67.5	0.00	0.00	0.00	0.00	0.00	0.00	0.00	0.00	0.00
90.0	0.00	0.00	0.00	0.00	0.00	0.00	0.00	0.00	0.00
112.5	0.00	0.00	0.00	0.00	0.00	0.00	0.00	0.00	0.00
135.0	0.00	0.00	0.00	0.00	0.00	0.00	0.00	0.00	0.00
157.5	0.00	0.00	0.00	0.00	0.00	0.00	0.00	0.00	0.00
180.0	0.00	0.00	0.00	0.00	0.00	0.00	0.00	0.00	0.00
202.5	0.00	0.00	0.00	0.00	0.00	0.00	0.00	0.00	0.00
225.0	0.00	0.00	0.00	0.00	0.00	0.00	0.00	0.00	0.00
247.5	0.00	0.00	0.00	0.00	0.00	0.00	0.00	0.00	0.00
270.0	0.00	0.00	0.00	0.00	0.00	0.00	0.00	0.00	0.00
292.5	0.00	0.00	0.00	0.00	0.00	0.00	0.00	0.00	0.00
315.0	0.00	0.00	0.00	0.00	0.00	0.00	0.00	0.00	0.00
337.5	0.00	0.00	0.00	0.00	0.00	0.00	0.00	0.00	0.00
360.0	0.00	0.00	0.00	0.00	0.00	0.00	0.00	0.00	0.00
C/ γ (°)	171.0	172.0	173.0	174.0	175.0	176.0	177.0	178.0	179.0
0.0	0.00	0.00	0.00	0.00	0.00	0.00	0.00	0.00	0.00
22.5	0.00	0.00	0.00	0.00	0.00	0.00	0.00	0.00	0.00
45.0	0.00	0.00	0.00	0.00	0.00	0.00	0.00	0.00	0.00
67.5	0.00	0.00	0.00	0.00	0.00	0.00	0.00	0.00	0.00
90.0	0.00	0.00	0.00	0.00	0.00	0.00	0.00	0.00	0.00
112.5	0.00	0.00	0.00	0.00	0.00	0.00	0.00	0.00	0.00
135.0	0.00	0.00	0.00	0.00	0.00	0.00	0.00	0.00	0.00
157.5	0.00	0.00	0.00	0.00	0.00	0.00	0.00	0.00	0.00
180.0	0.00	0.00	0.00	0.00	0.00	0.00	0.00	0.00	0.00
202.5	0.00	0.00	0.00	0.00	0.00	0.00	0.00	0.00	0.00
225.0	0.00	0.00	0.00	0.00	0.00	0.00	0.00	0.00	0.00
247.5	0.00	0.00	0.00	0.00	0.00	0.00	0.00	0.00	0.00
270.0	0.00	0.00	0.00	0.00	0.00	0.00	0.00	0.00	0.00
292.5	0.00	0.00	0.00	0.00	0.00	0.00	0.00	0.00	0.00
315.0	0.00	0.00	0.00	0.00	0.00	0.00	0.00	0.00	0.00
337.5	0.00	0.00	0.00	0.00	0.00	0.00	0.00	0.00	0.00
360.0	0.00	0.00	0.00	0.00	0.00	0.00	0.00	0.00	0.00
C/ γ (°)	180.0								
0.0	0.00								
22.5	0.00								
45.0	0.00								
67.5	0.00								
90.0	0.00								
112.5	0.00								
135.0	0.00								
157.5	0.00								
180.0	0.00								
202.5	0.00								
225.0	0.00								
247.5	0.00								
270.0	0.00								
292.5	0.00								
315.0	0.00								
337.5	0.00								
360.0	0.00								